



# SIDC Stakeholder Report

July 2020



## List of contents

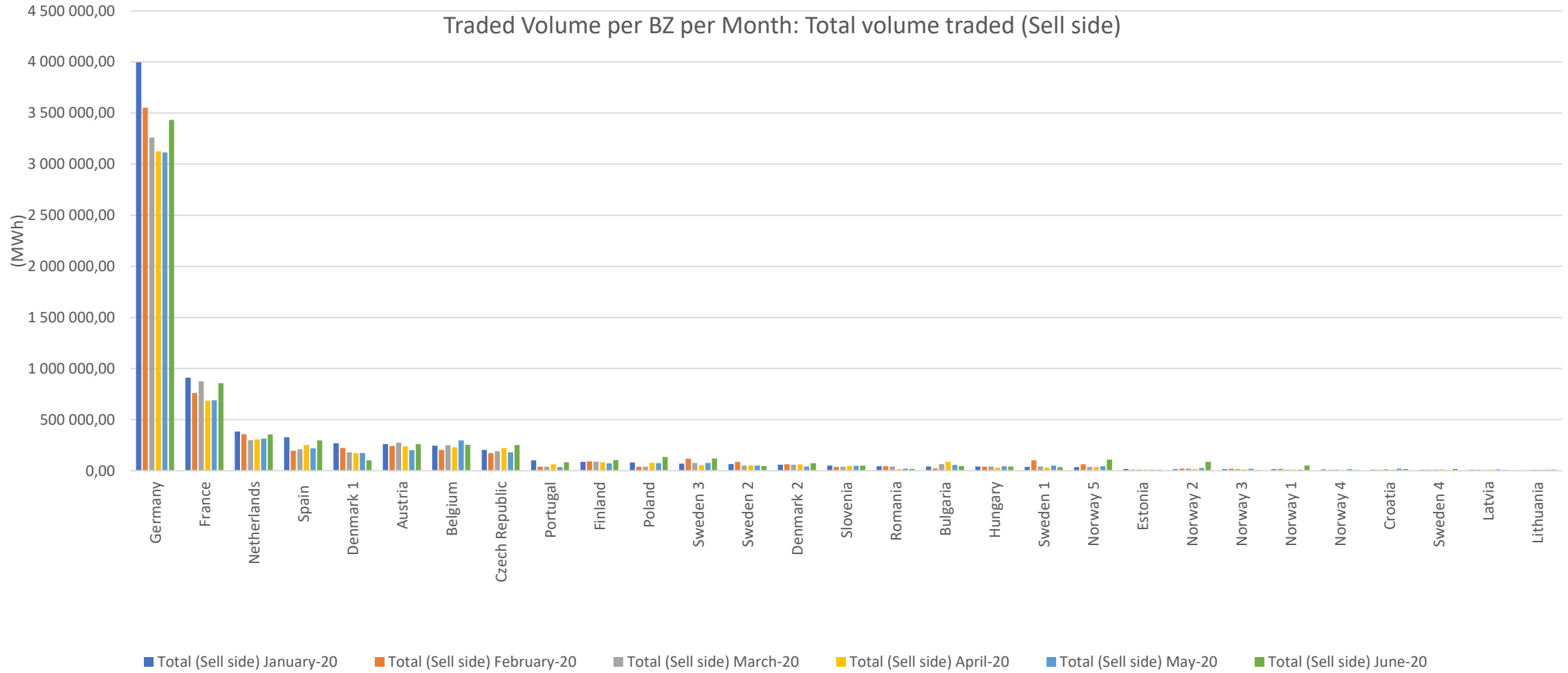
<b>1</b>	<b>Traded volume per BZ per month</b>	<b>Slides 4-11</b>
<b>2</b>	<b>Weighted average prices per MTU per BZ</b>	<b>Slides 12-13</b>
<b>3</b>	<b>Overall volume traded across the coupled region</b>	<b>Slide 14</b>
<b>4</b>	<b>Total volume matched hours before delivery</b>	<b>Slide 15</b>
<b>5</b>	<b>Volume fractions of products per BZ per month (%)</b>	<b>Slides 16-19</b>
<b>6</b>	<b>Share of cross-bidding zone trades vs. overall BZ volume</b>	<b>Slides 20-21</b>
<b>7</b>	<b>Total availability of the central SIDC platform</b>	<b>Slide 22</b>
<b>8</b>	<b>Net positions</b>	<b>Slides 23-32</b>
<b>9</b>	<b>Total amount of explicit capacity allocation</b>	<b>Slides 33-34</b>
<b>10</b>	<b>Explicit allocation share on total allocation</b>	<b>Slides 34-36</b>
<b>11</b>	<b>ATC utilization rate</b>	<b>Slide 37</b>
<b>12</b>	<b>Evolution of order events and trades</b>	<b>Slide 38</b>

## Introduction

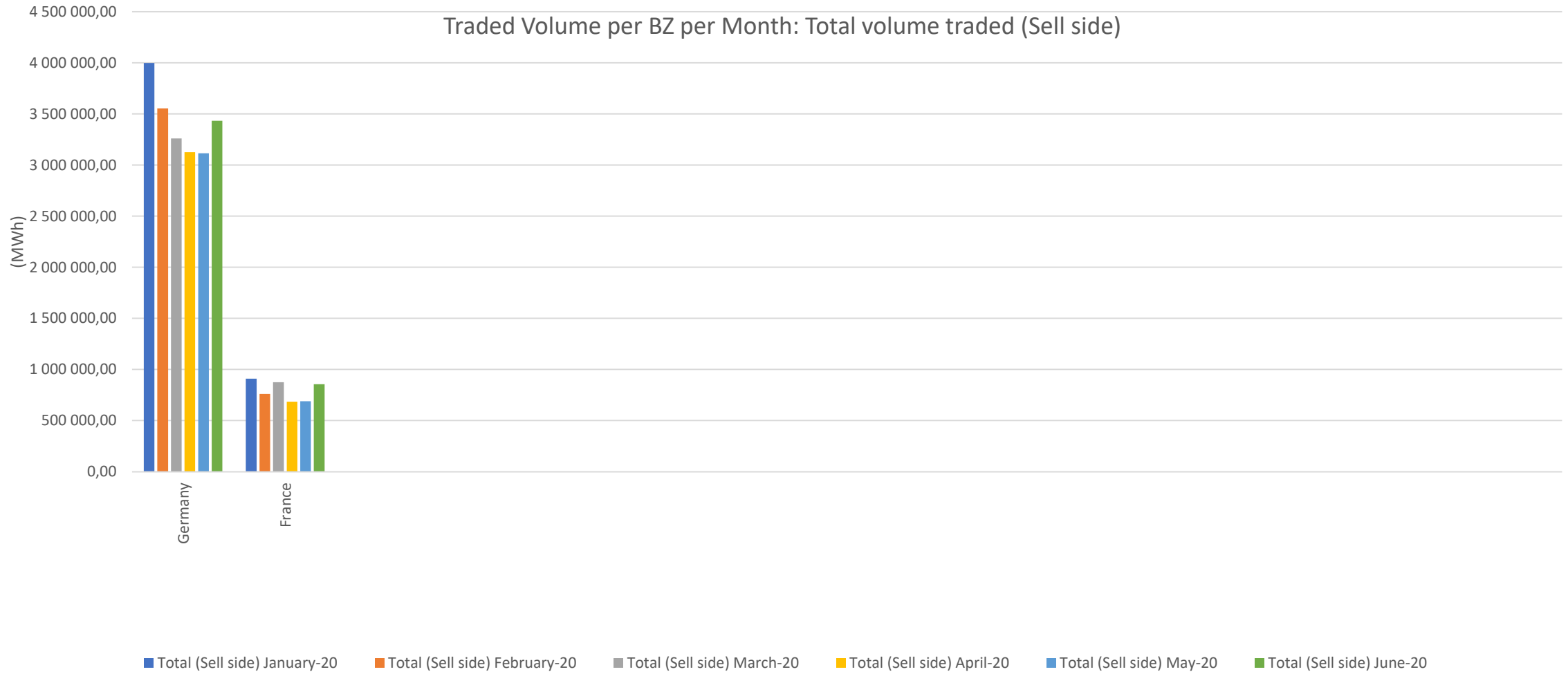
- This document contains charts on the indicators defined for SIDC stakeholder reporting.

Indicator name	Indicator Description	Indicator generation period
<b>Traded Volume per BZ per Month</b>	Aggregated volume of all Trades within the Intraday Market Timeframe per Bidding Zone	Half-yearly (H1, H2), reported monthly
<b>Weighted Average prices per MTU per BZ</b>	The indicators counts the volume-weighted average price of all Trades per contract per Bidding Zone	Half-yearly (H1, H2), reported monthly
<b>Overall volume traded across the coupled region (Overall volume traded in XBID)</b>	Aggregated volume of all Trades within the Intraday Market Timeframe	Half-yearly (H1, H2), reported monthly
<b>Total volume matched hours before delivery</b>	This indicator counts the traded volumes, grouped per contract with same “delivery time start-end”, per combination of Bidding Zones and grouped according to the hours left to delivery and aggregated per month	Half-yearly (H1, H2), reported monthly
<b>Volume fractions of products per BZ per Month (%)</b>	This indicator counts for each Bidding Zone the traded volumes per products as a percentage of the total traded volume of the Bidding Zone.	Half-yearly (H1, H2), reported monthly
<b>Share of cross-bidding zone trades vs. overall BZ volume</b>	This indicator counts per Bidding Zone the traded volumes on Bidding Zone borders versus the aggregated volume of all Trades within the Intraday Market Timeframe	Half-yearly (H1, H2), reported monthly
<b>Total availability of the central SIDC platform</b>	This indicator represents the central SIDC platform aggregated availability in percentage.	Monthly
<b>Net Positions</b>	This indicator counts (calculates) the Net Positions for each Bidding Zone per MTU level.	Monthly
<b>Total amount of Explicit Capacity Allocation</b>	This indicator counts on a daily basis the total amount of Intraday Cross-Zonal Capacity, which do not derive from a Trade in the Shared Order Book, per direction (import/export).	Monthly
<b>Explicit allocation share on total allocation</b>	This indicator reports on share of Explicit allocation compared to total allocations per BZ border where explicit allocations are offered to the market.	Monthly
<b>ATC utilization rate</b>	ratio for each MTU calculated from the Allocated netted Intraday Capacity / offered Intraday capacity for each border in both directions	Monthly
<b>Evolution of the order events and trades</b>	This indicator reports on daily Order Transactions and Trades since the first complete day of trading.	Half-yearly (H1, H2), reported monthly

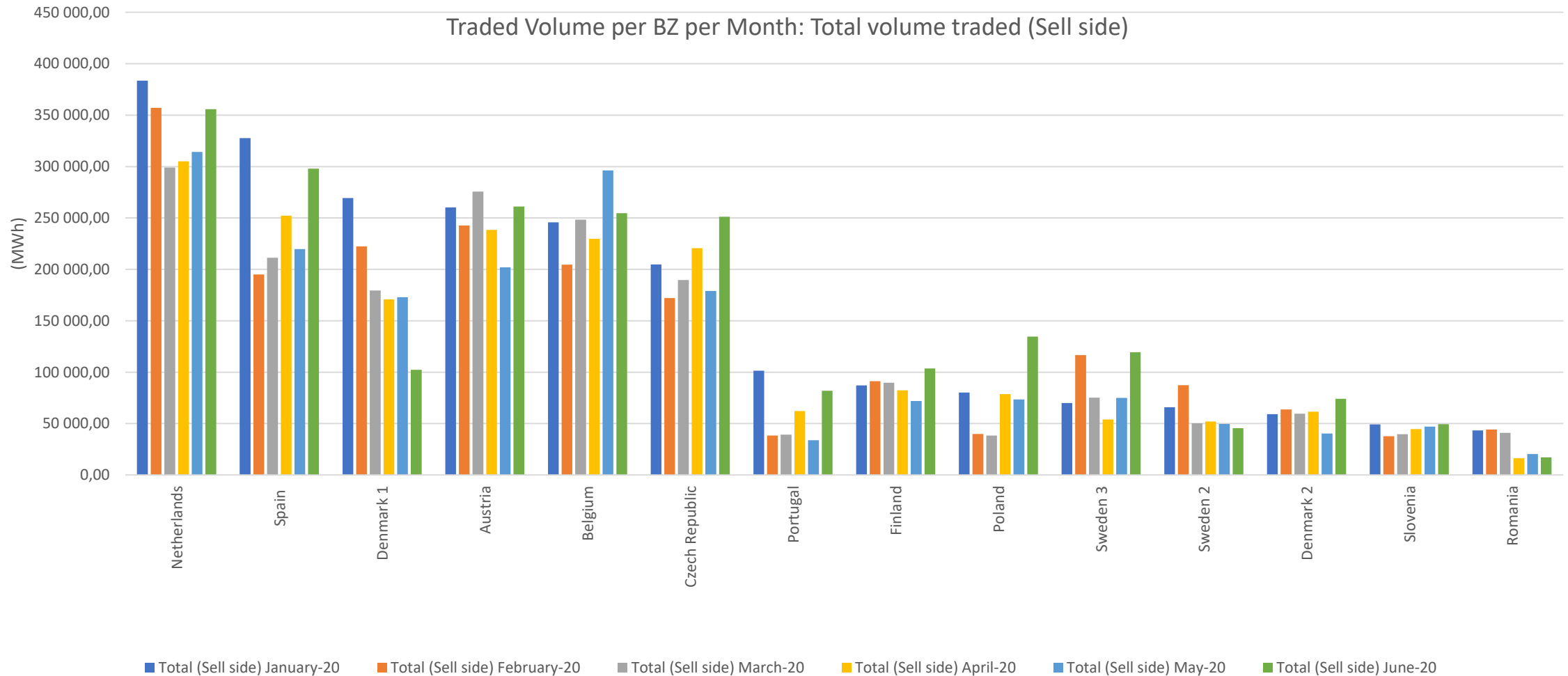
# 1. Traded volume per BZ per month (1/8)



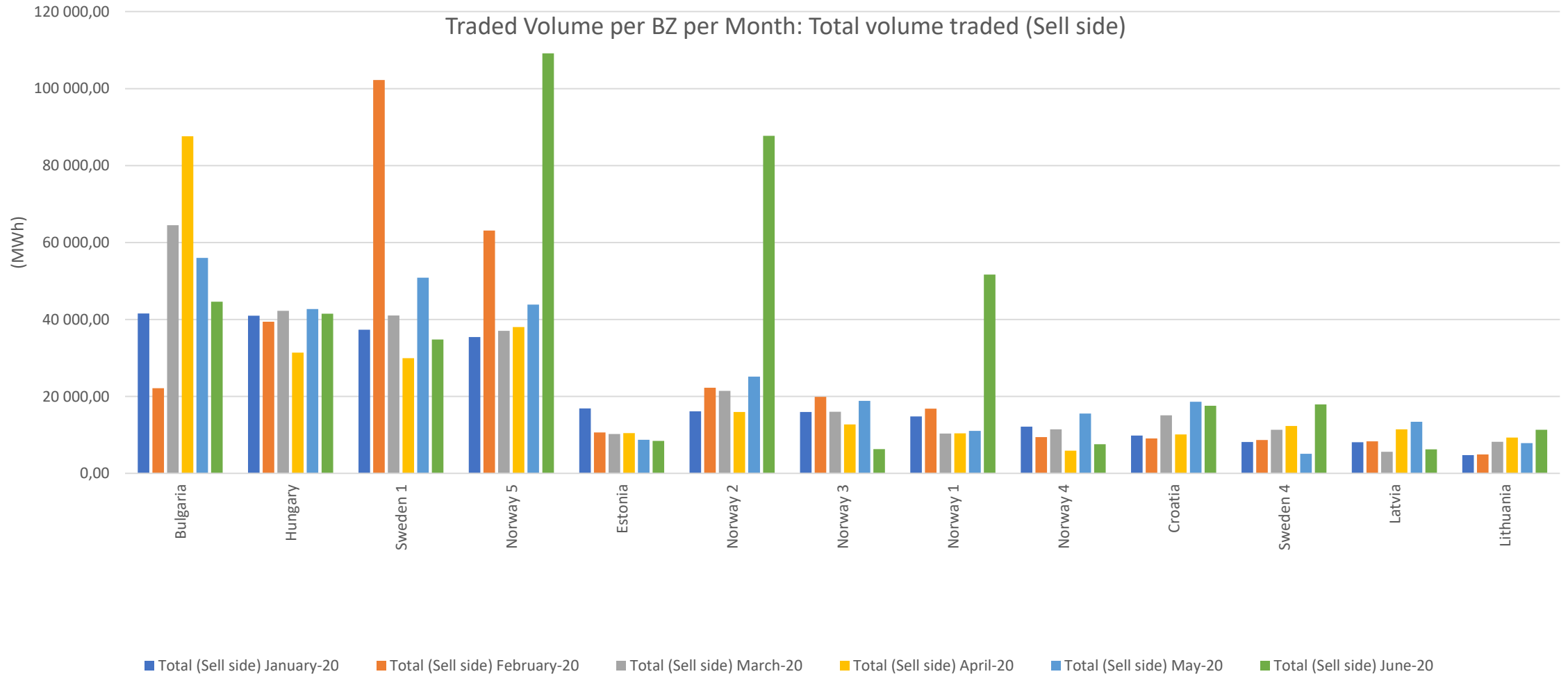
# 1. Traded volume per BZ per month (2/8)



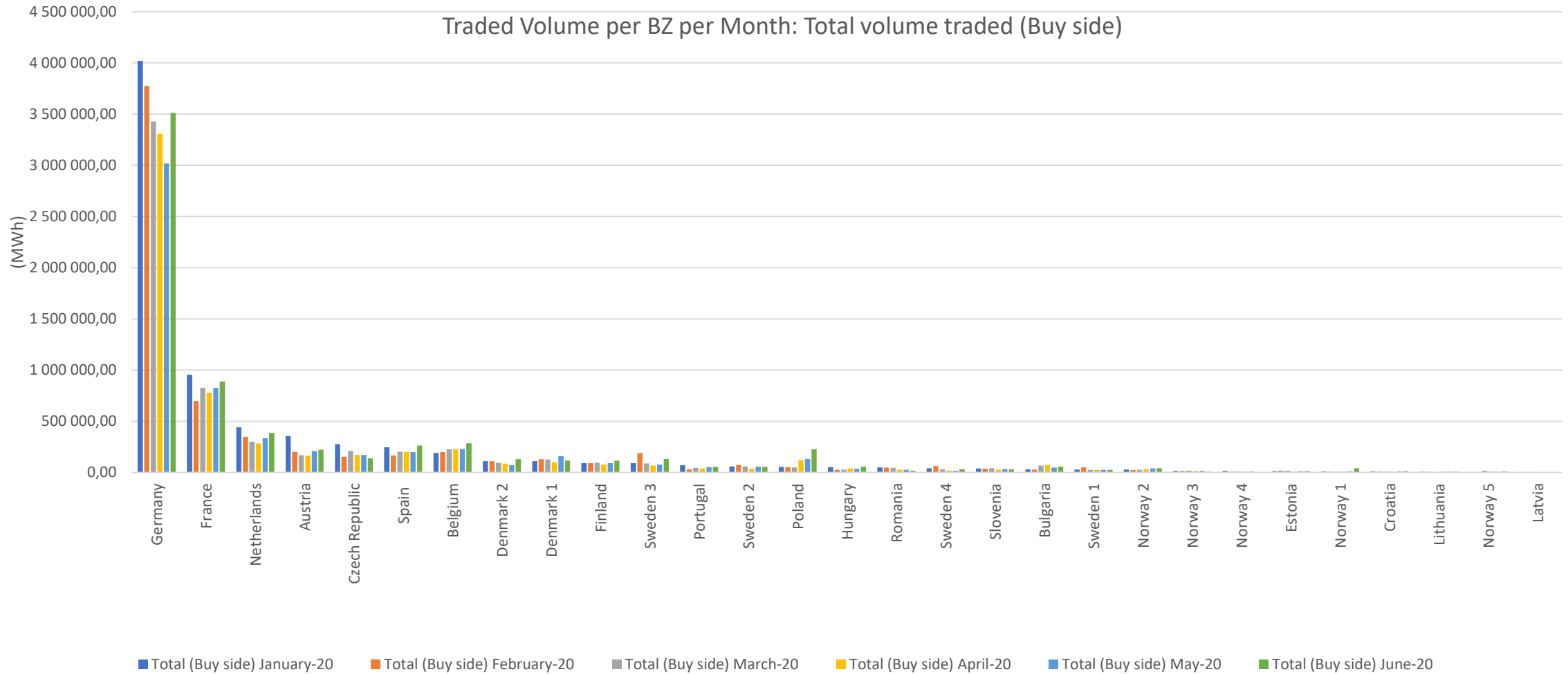
# 1. Traded volume per BZ per month (3/8)



# 1. Traded volume per BZ per month (4/8)

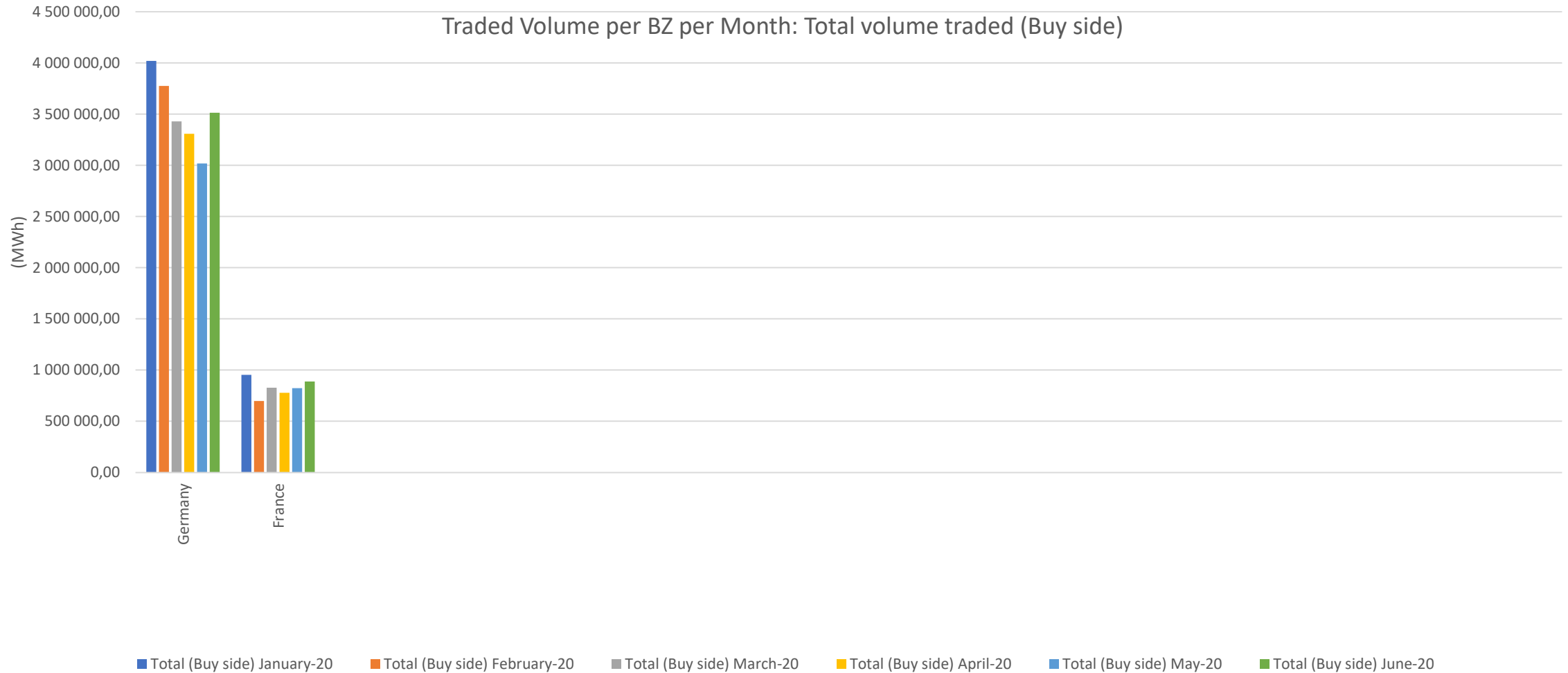


# 1. Traded volume per BZ per month (5/8)

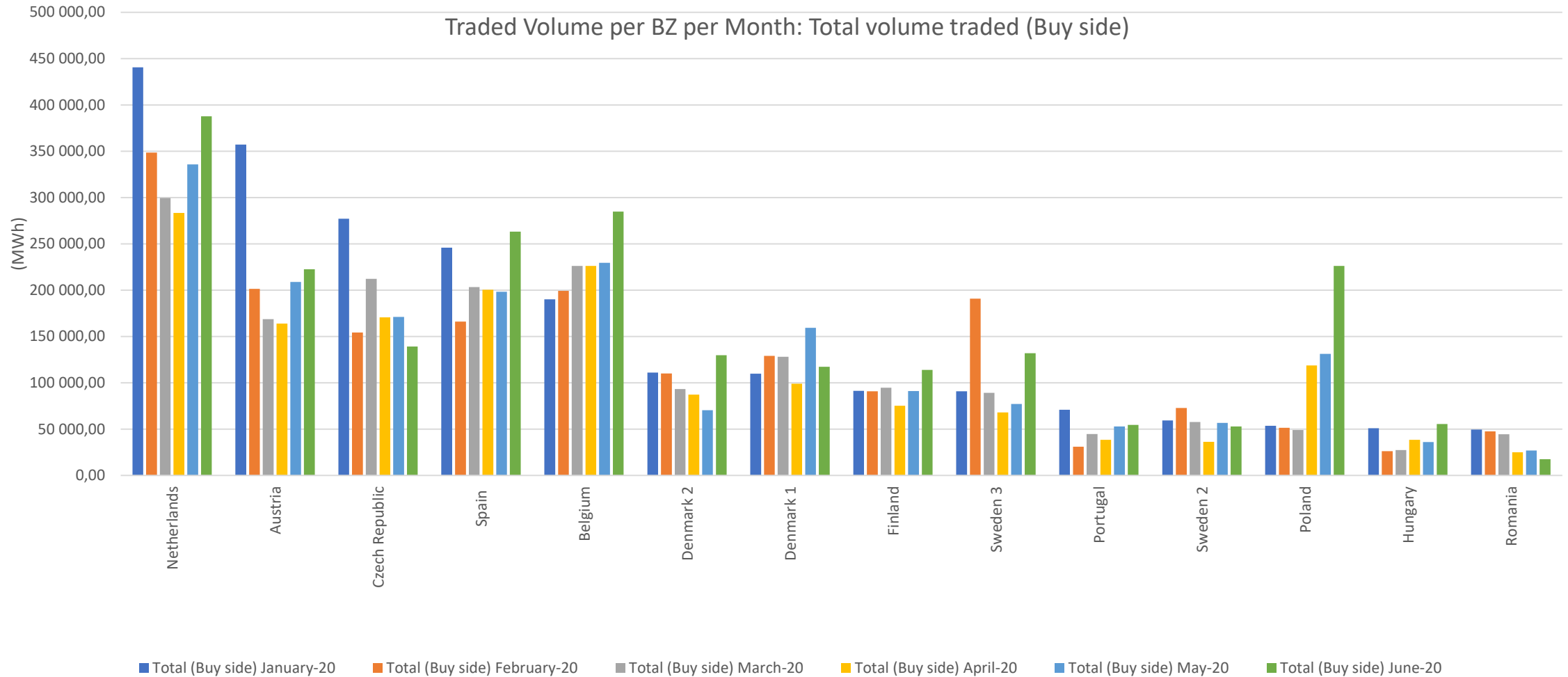




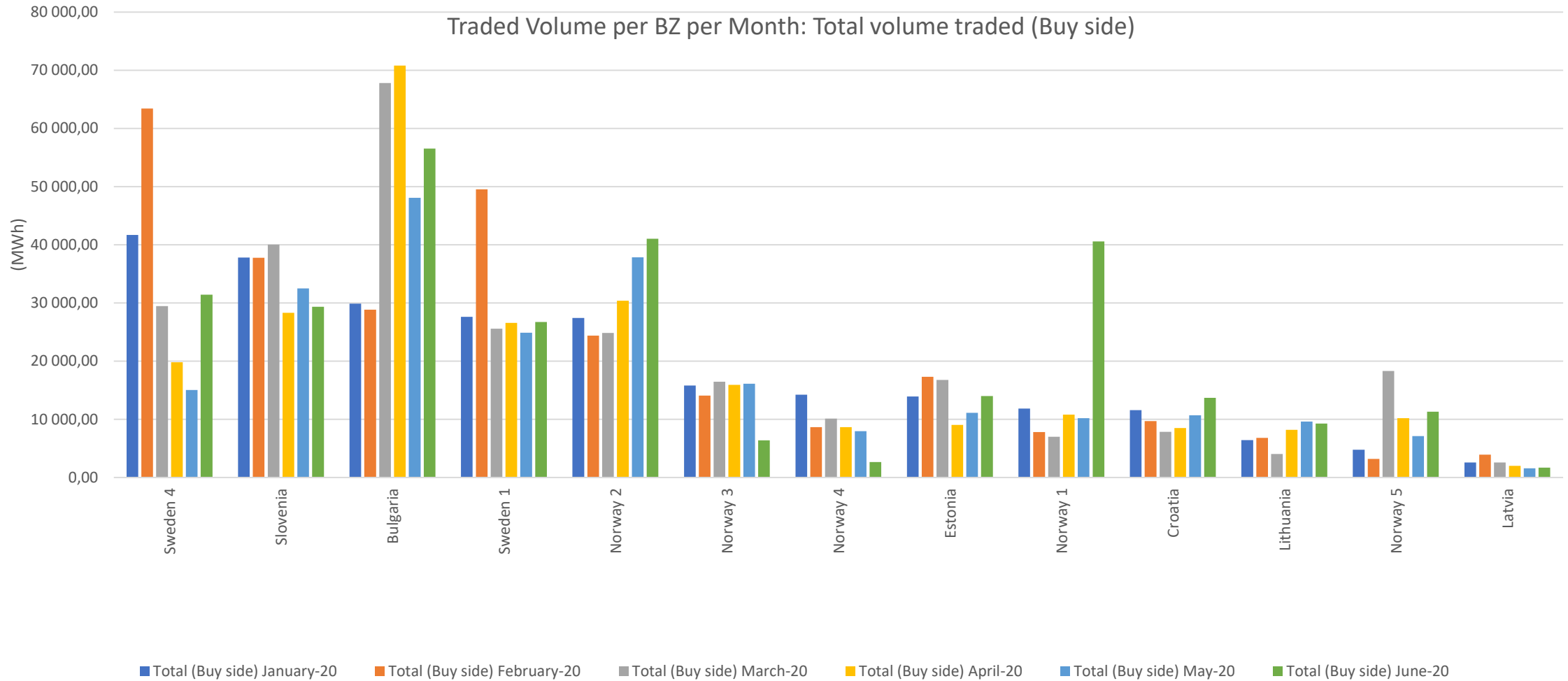
# 1. Traded volume per BZ per month (6/8)



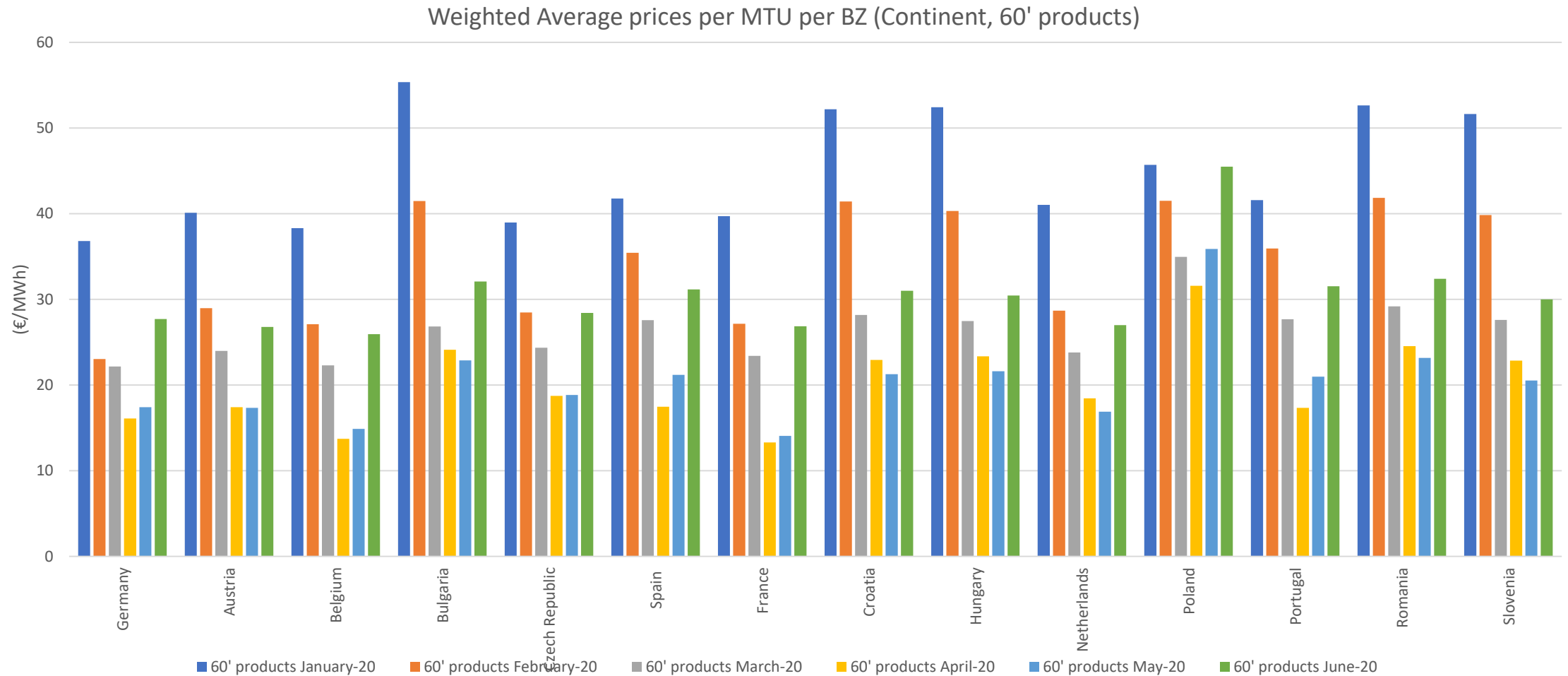
# 1. Traded volume per BZ per month (7/8)



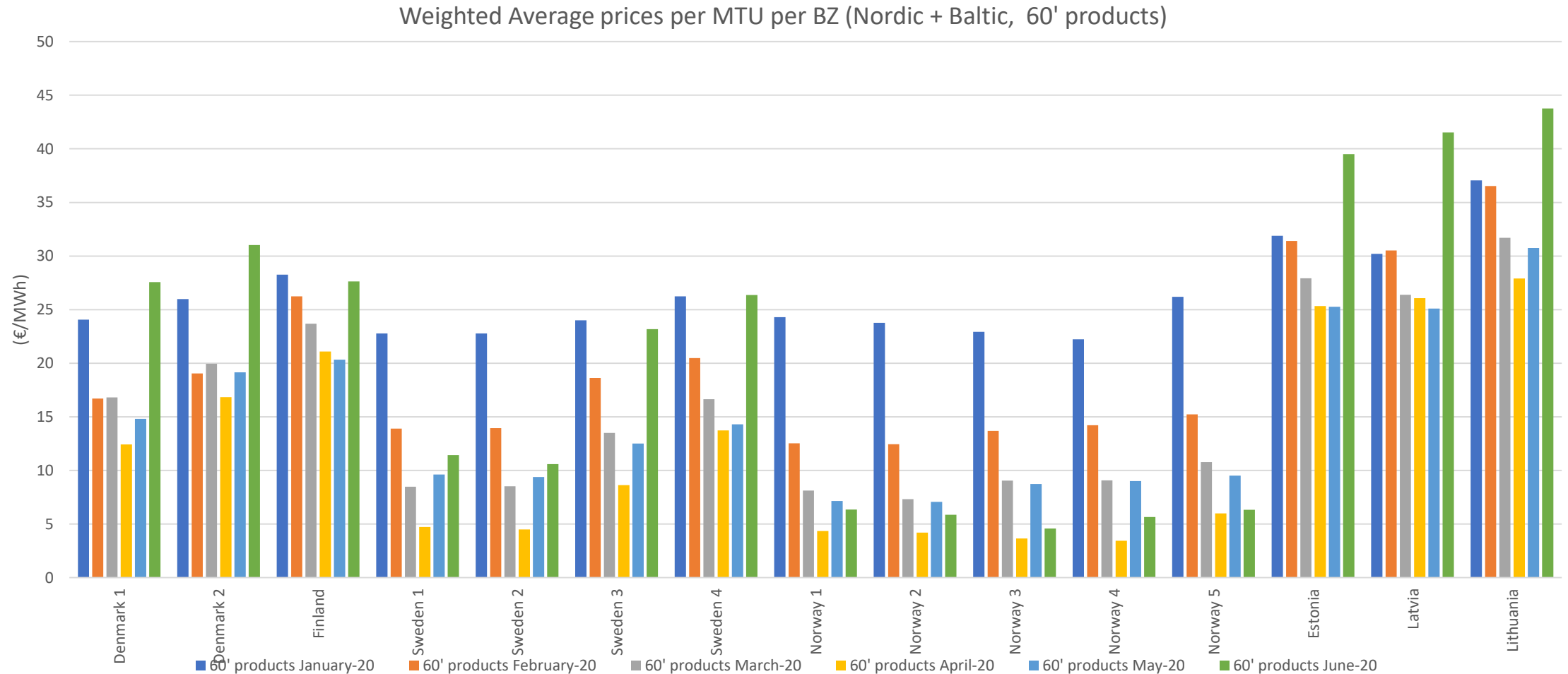
# 1. Traded volume per BZ per month (8/8)



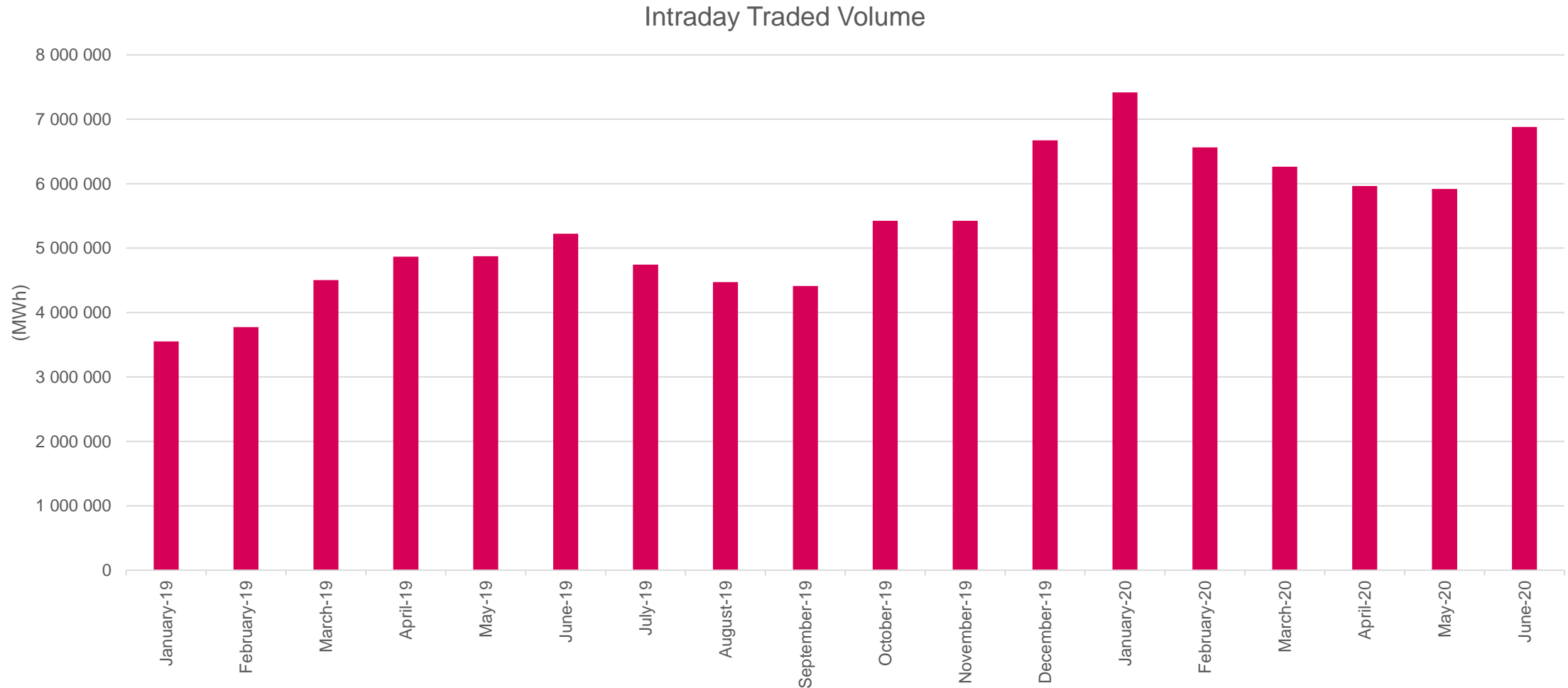
## 2. Weighted average prices per MTU per BZ (1/2)



## 2. Weighted average prices per MTU per BZ (2/2)

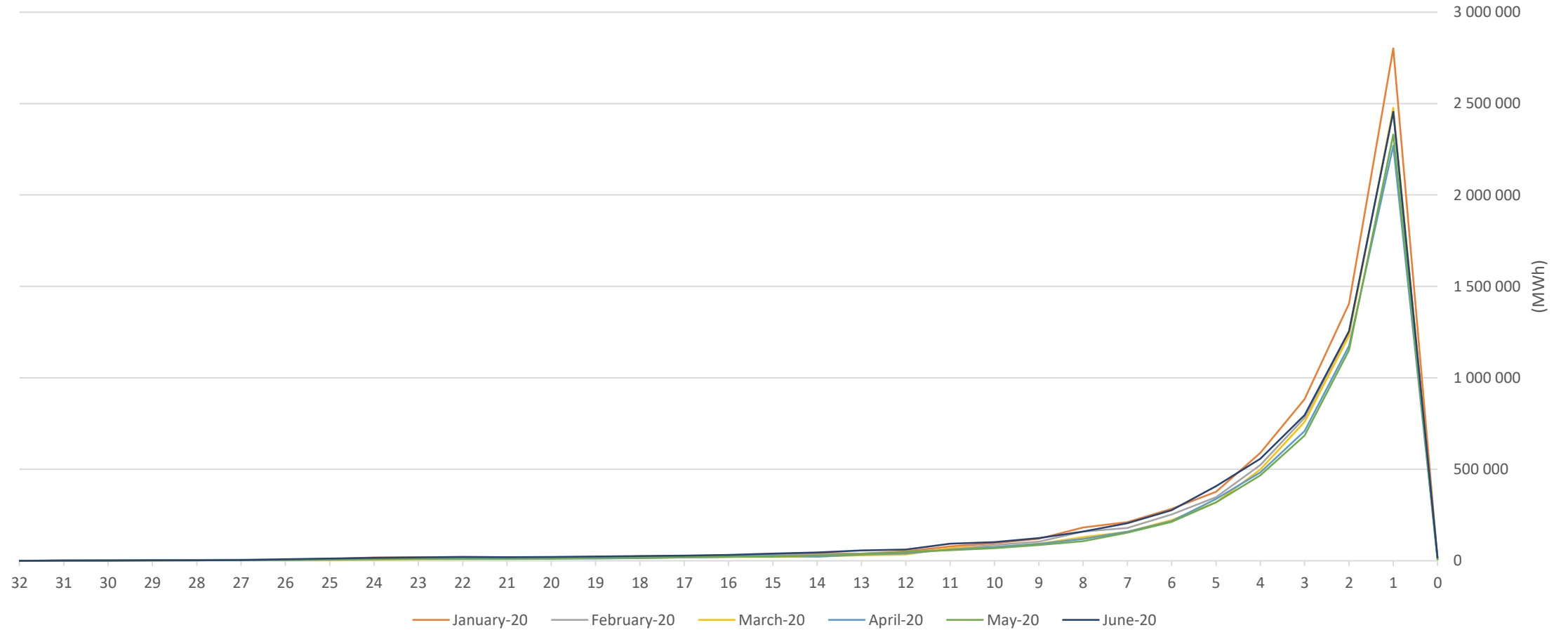


### 3. Overall volume traded across the coupled region



## 4. Total volume matched hours before delivery

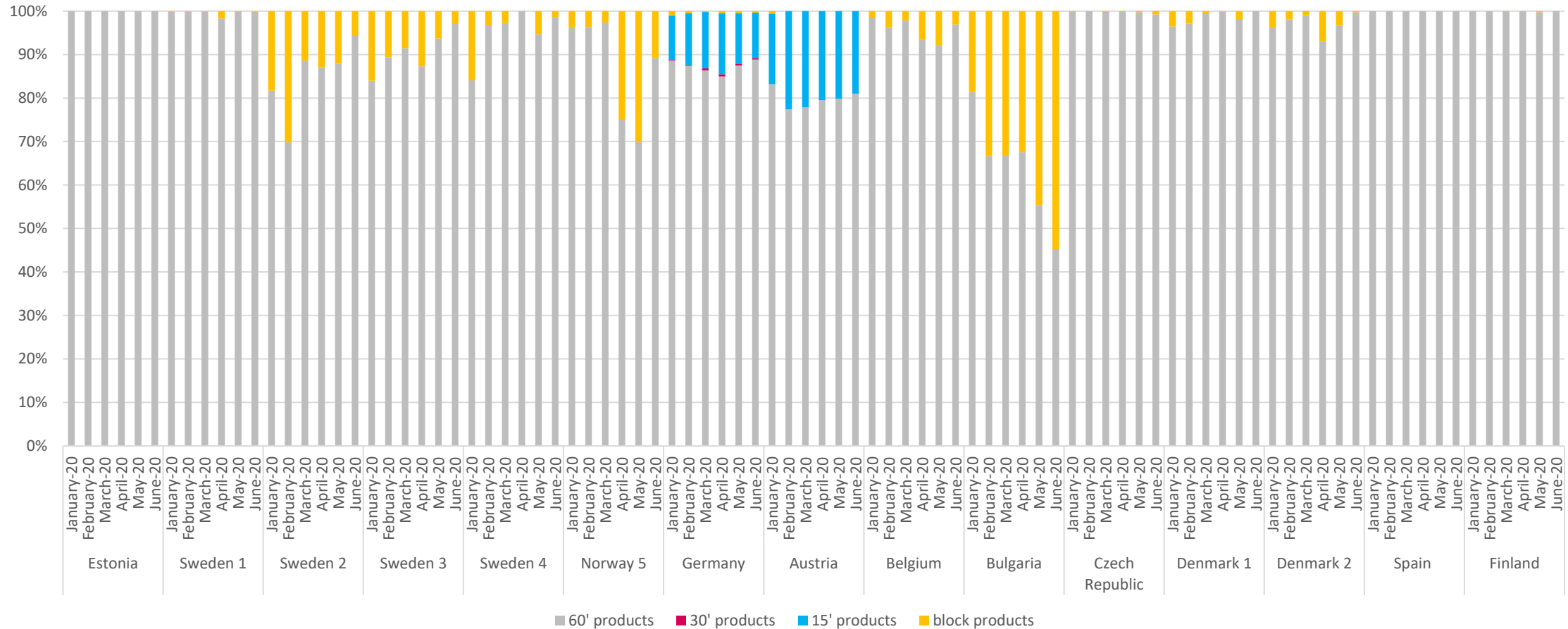
Total volume matched within hours before delivery



Please avoid misinterpretation of the line(s) between "1" and "0" being aware that the volume matched between 1 hour to 30 minutes is substantially lower (in thousands of MWhs) and there is no volume matched between 30 minutes to 0.

## 5. Volume fractions of products per BZ per month (1/4)

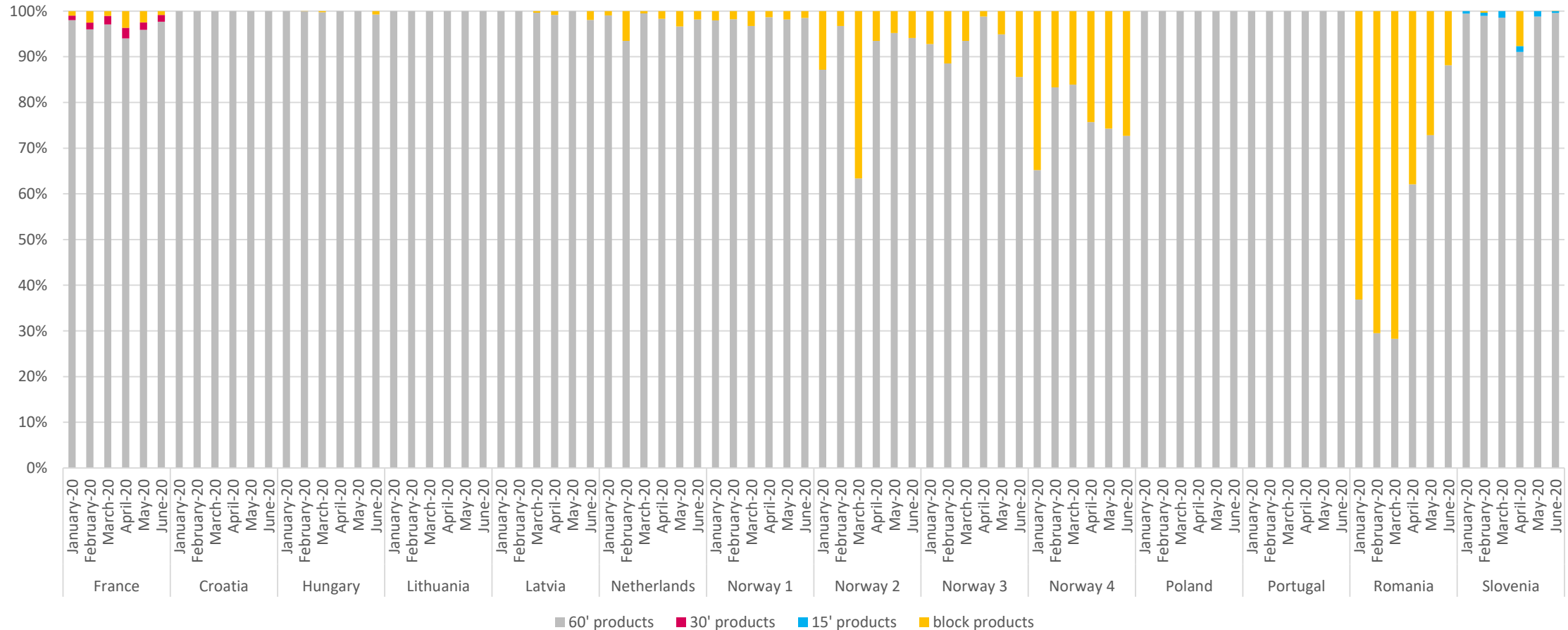
Volume fractions of products per BZ per Month (Sell side)



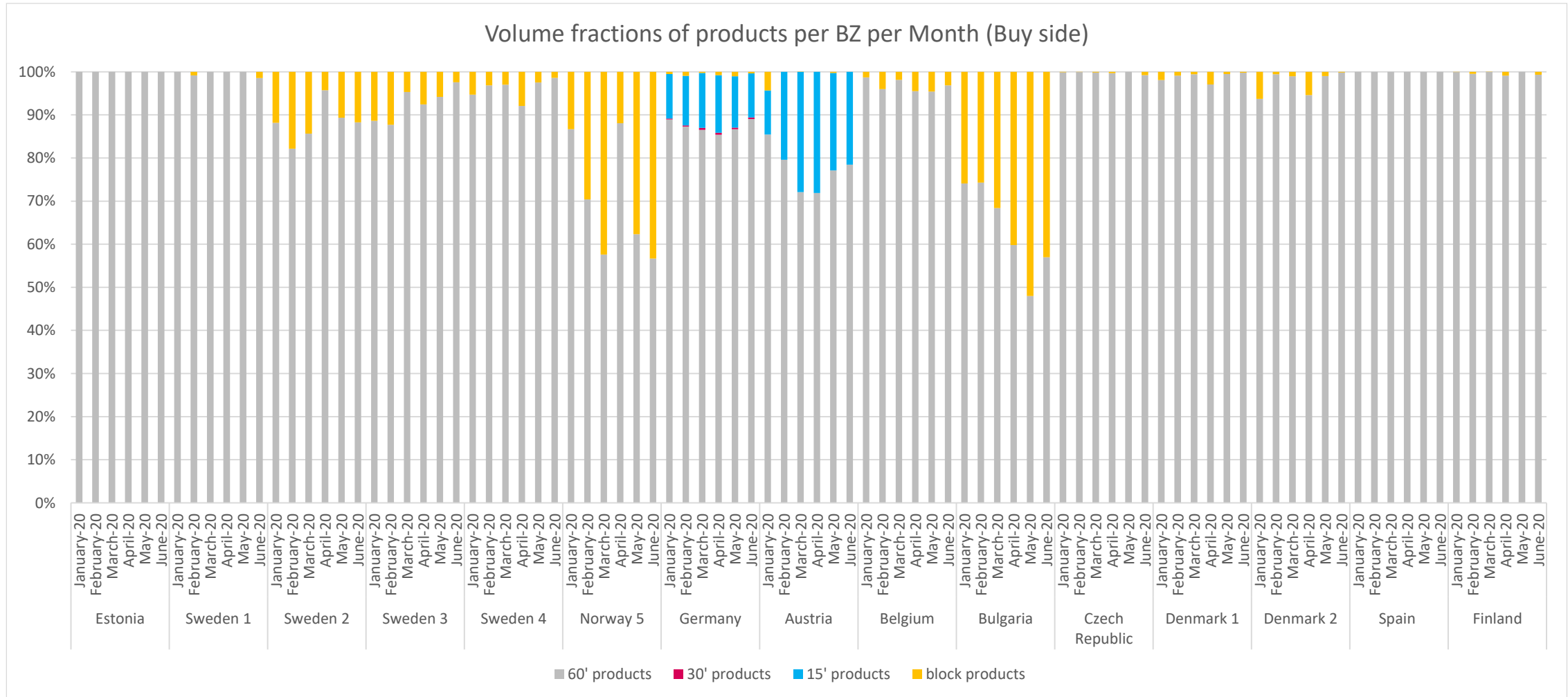


## 5. Volume fractions of products per BZ per month (2/4)

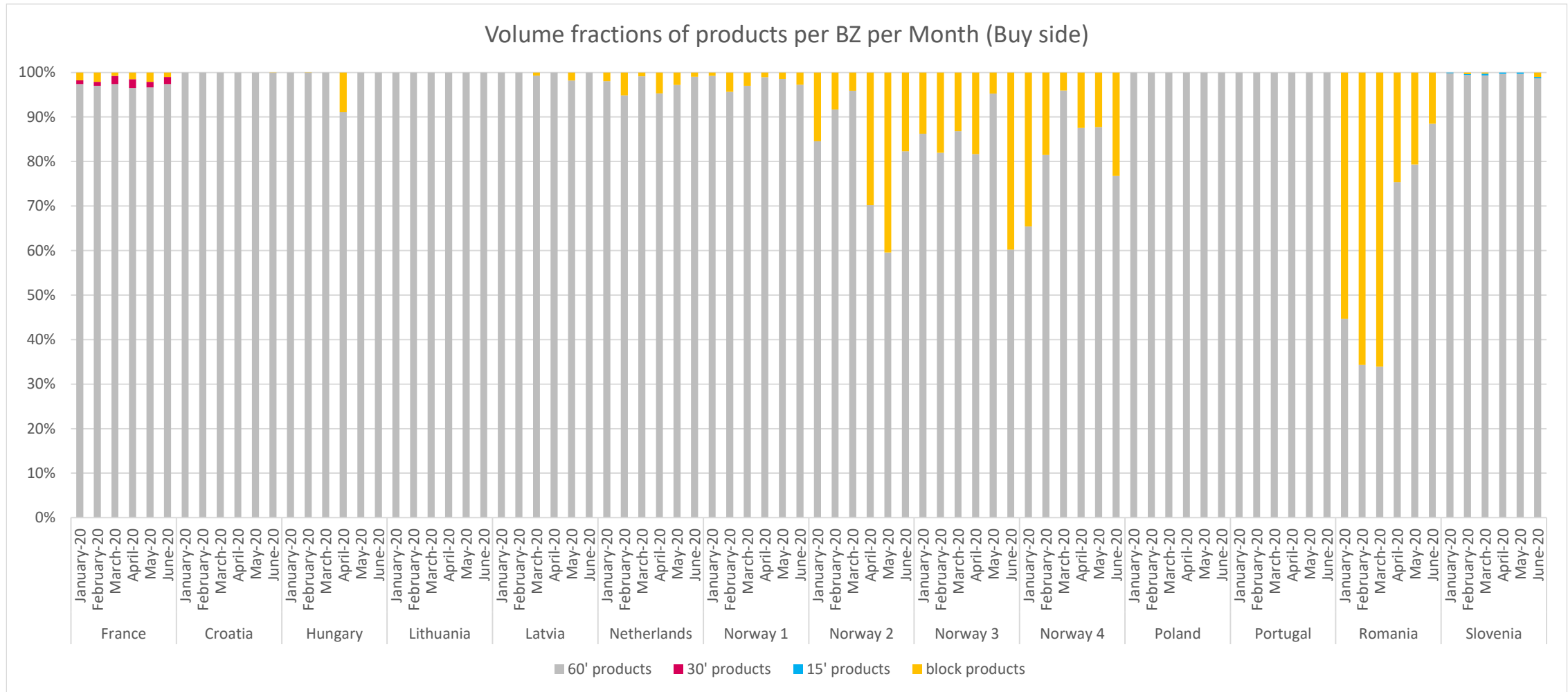
Volume fractions of products per BZ per Month (Sell side)



## 5. Volume fractions of products per BZ per month (3/4)

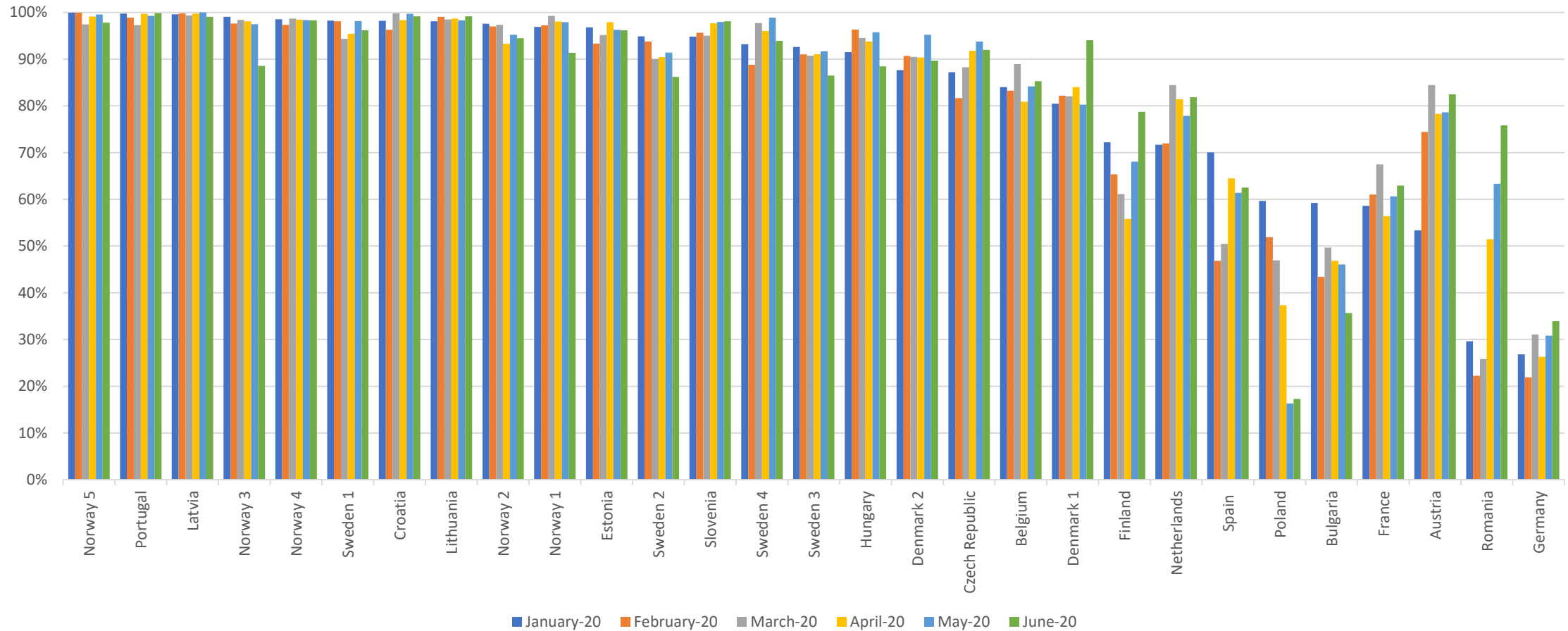


## 5. Volume fractions of products per BZ per month (4/4)



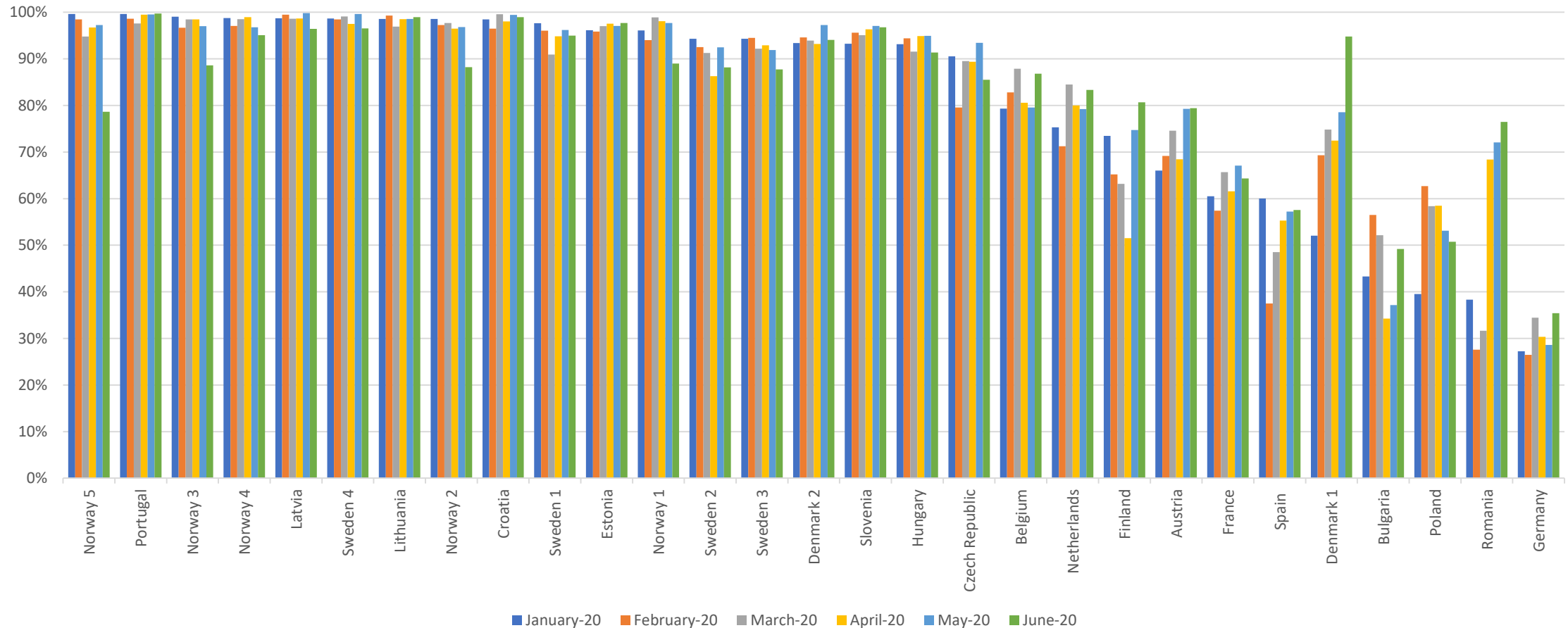
## 6. Share of cross-bidding zone trades vs. overall BZ volume (1/2)

Share of cross-bidding zone trades vs. overall BZ volume (Sell side)

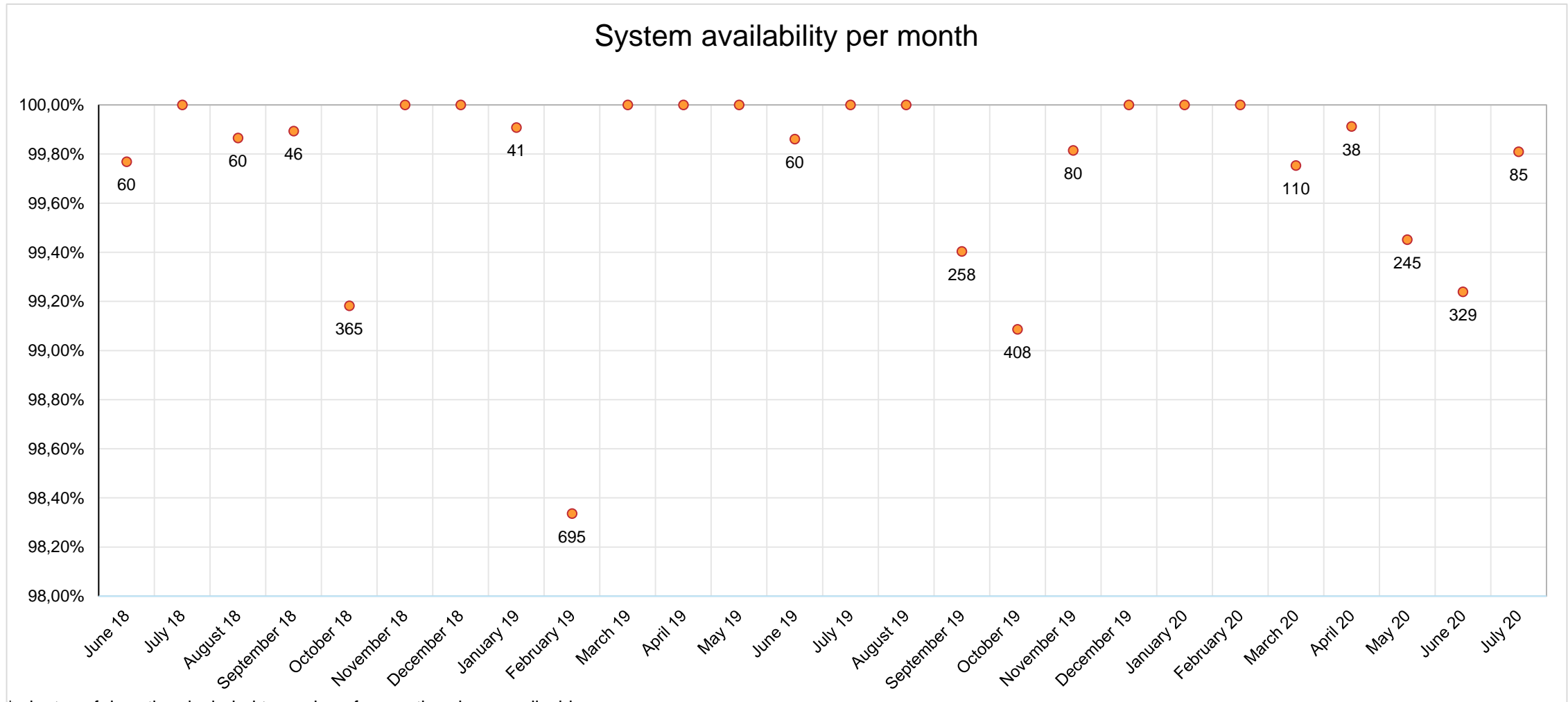


## 6. Share of cross-bidding zone trades vs. overall BZ volume (2/2)

Share of cross-bidding zone trades vs. overall BZ volume (Buy side)

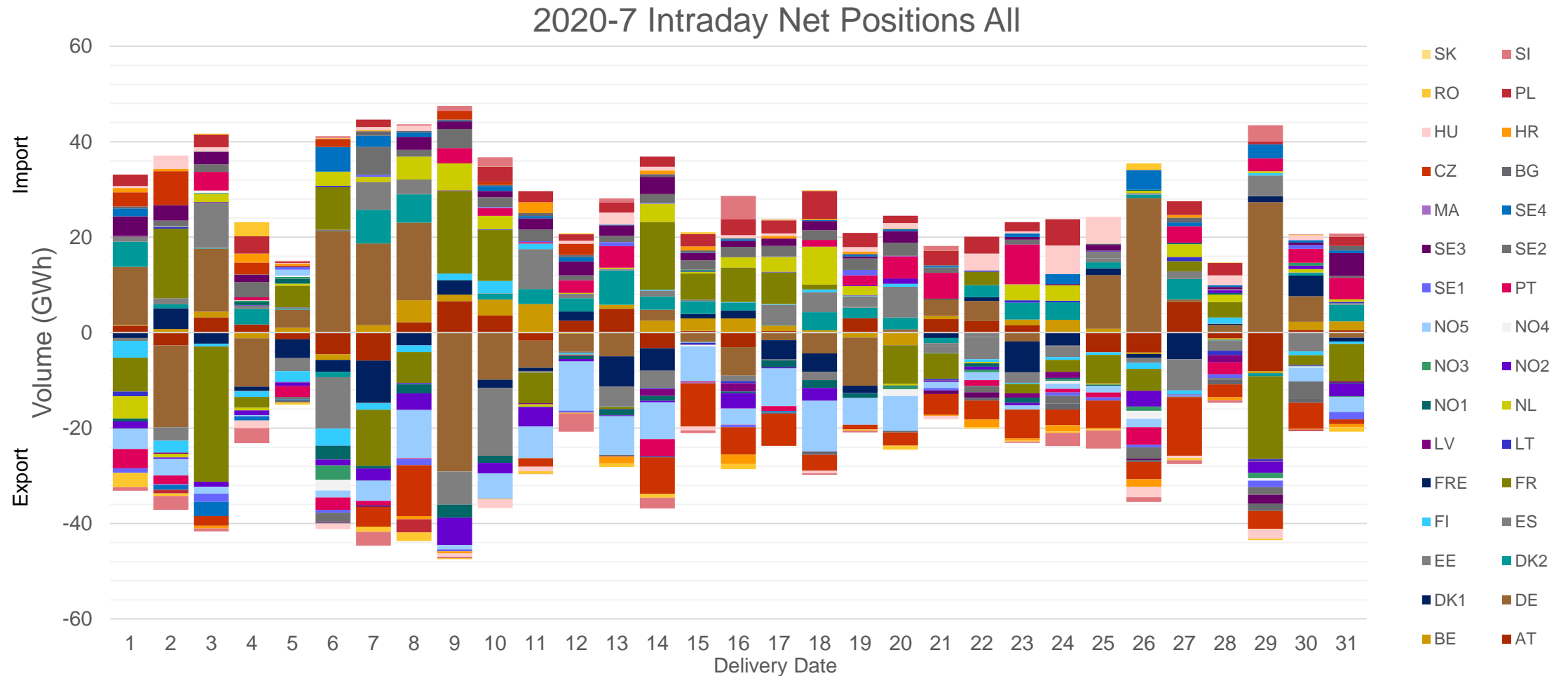


## 7. Total availability of the central SIDC platform



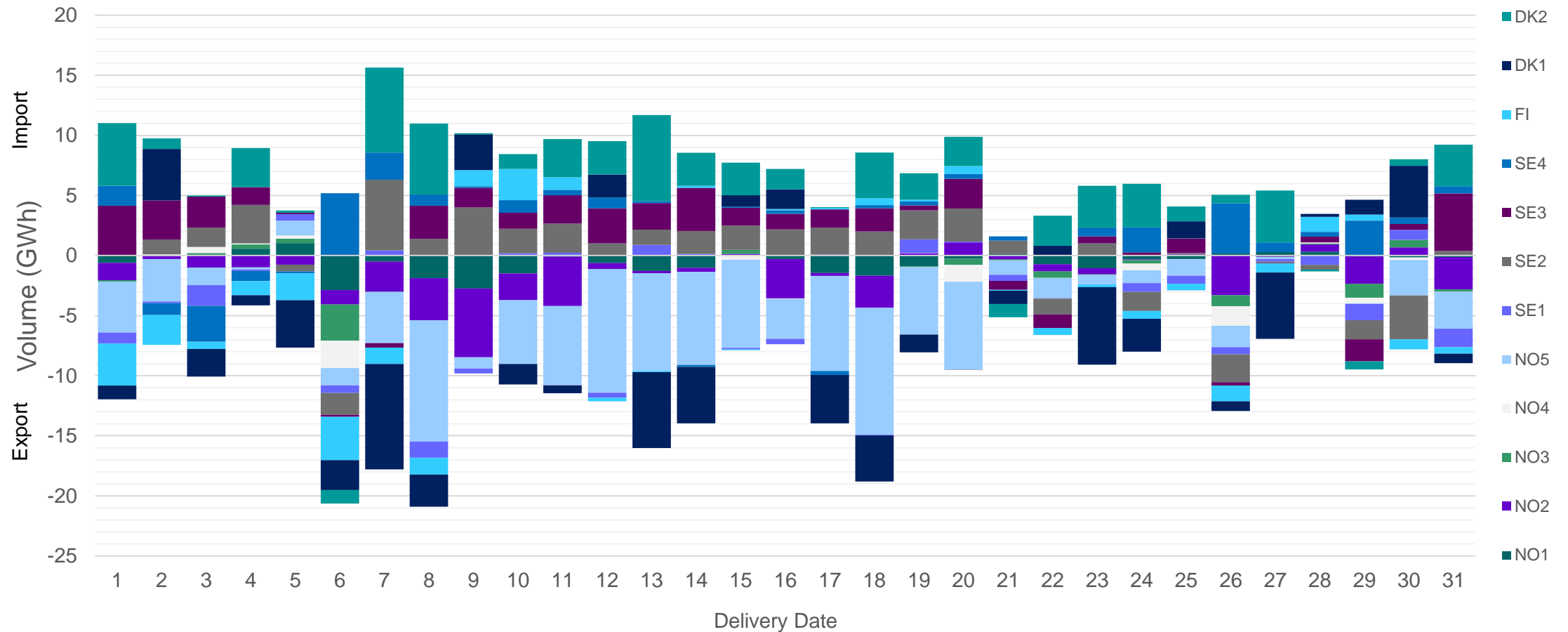
\*minutes of downtime included to markers for months where applicable

## 8. Net positions (1/10)



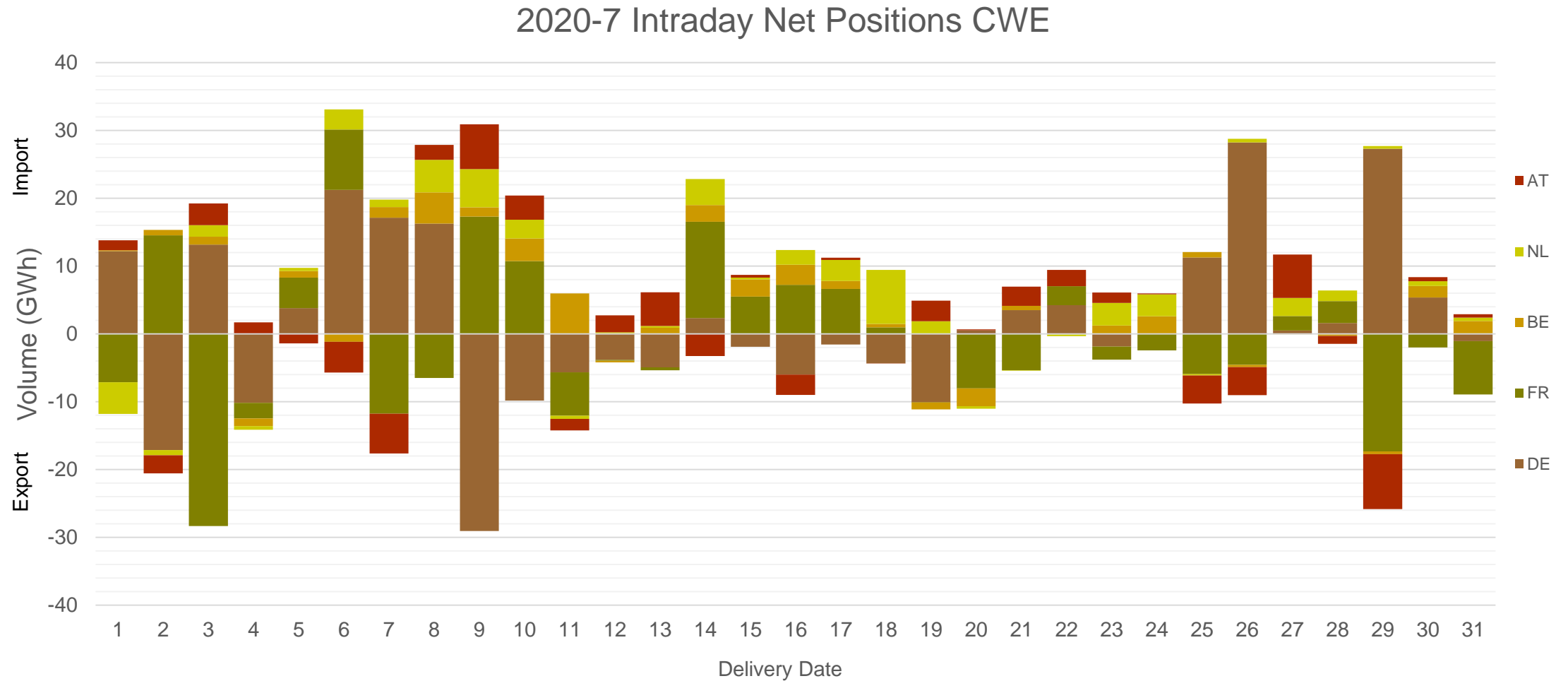
## 8. Net positions (2/10)

2020-7 Intraday Net Positions Nordic



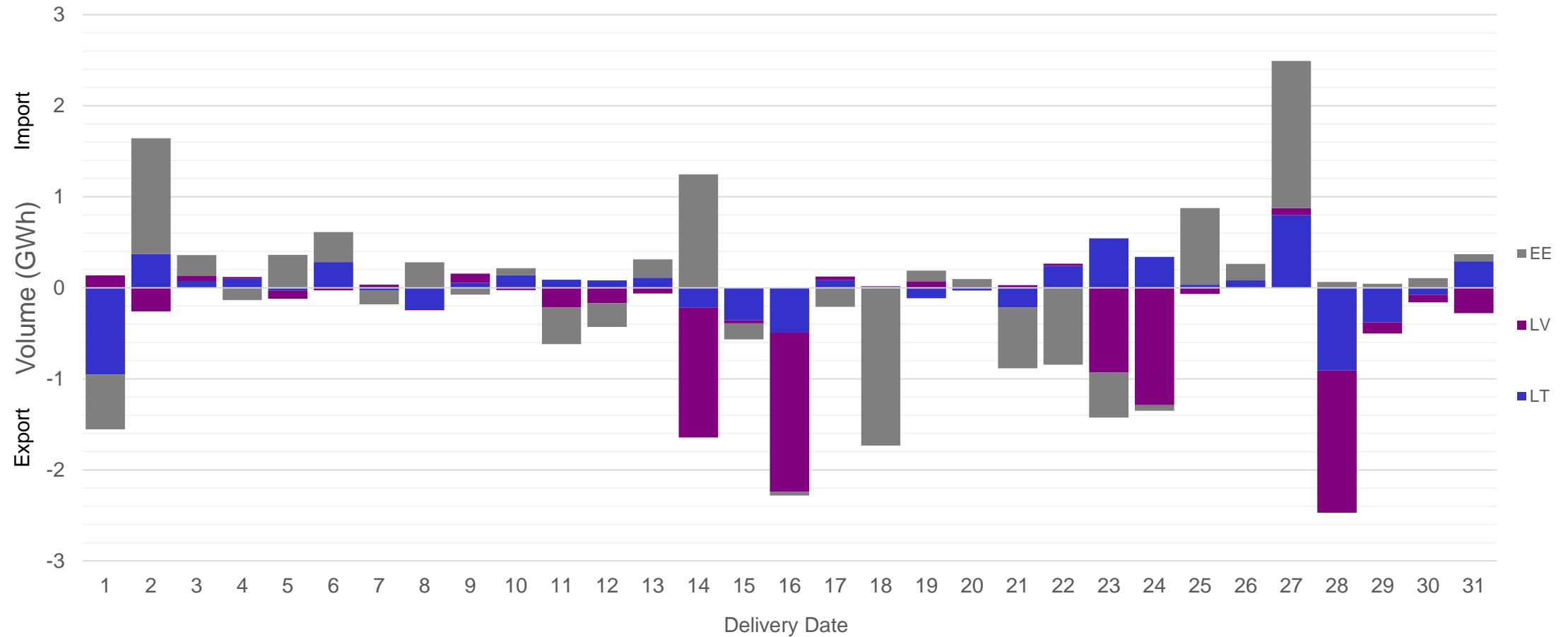


## 8. Net positions (3/10)

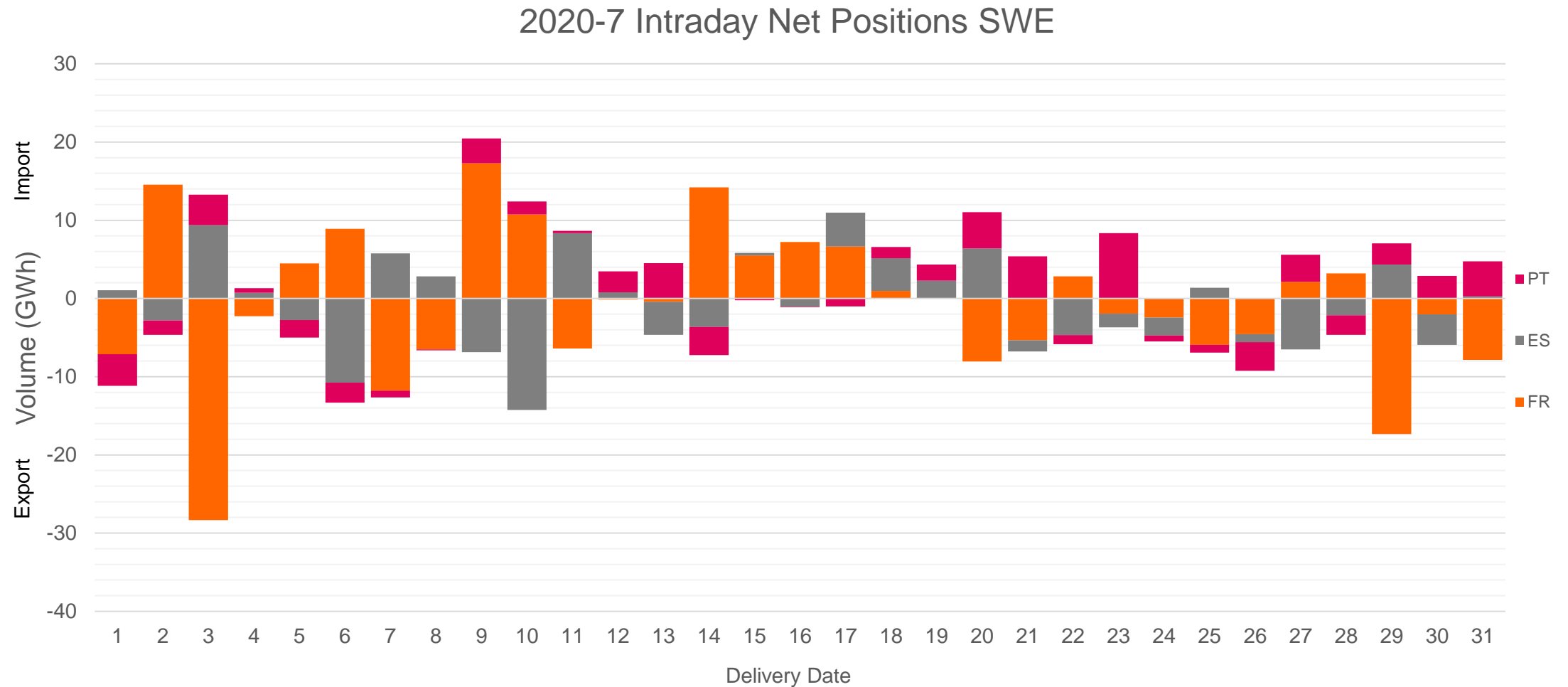


## 8. Net positions (4/10)

2020-7 Intraday Net Positions Baltic

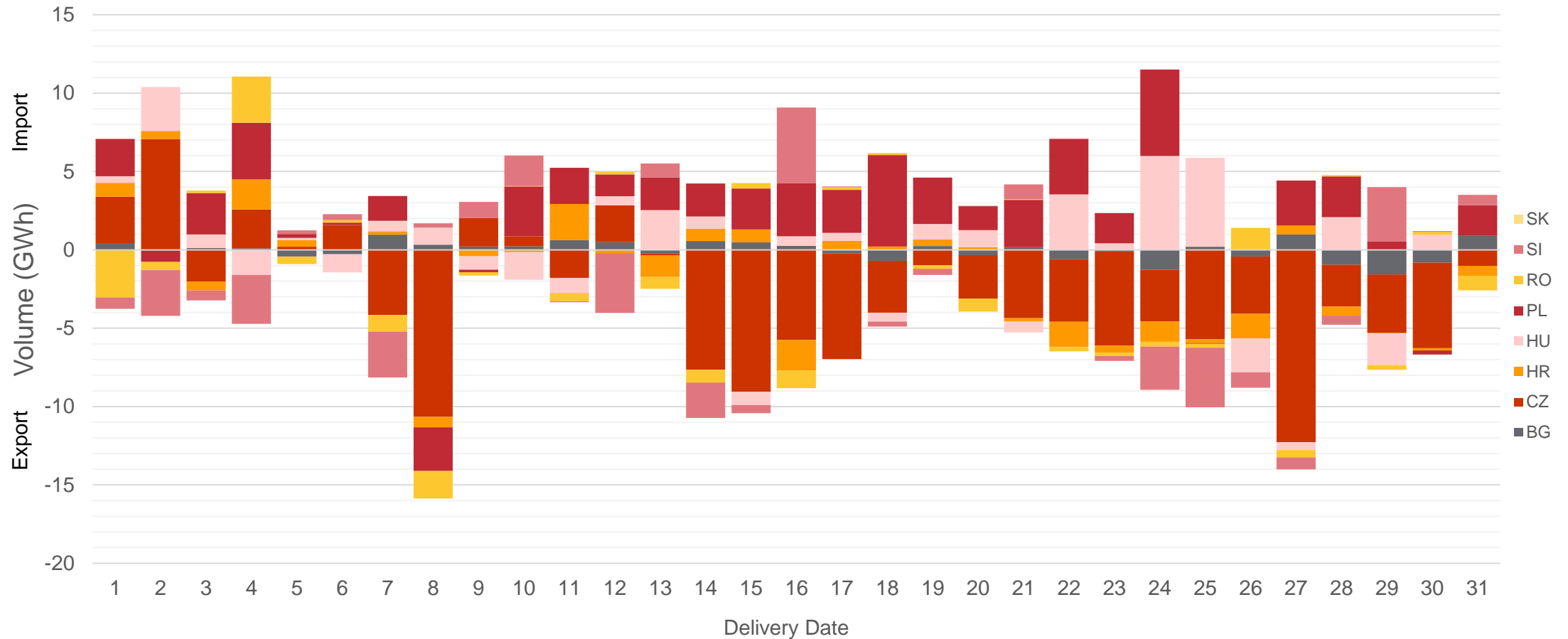


## 8. Net positions (5/10)

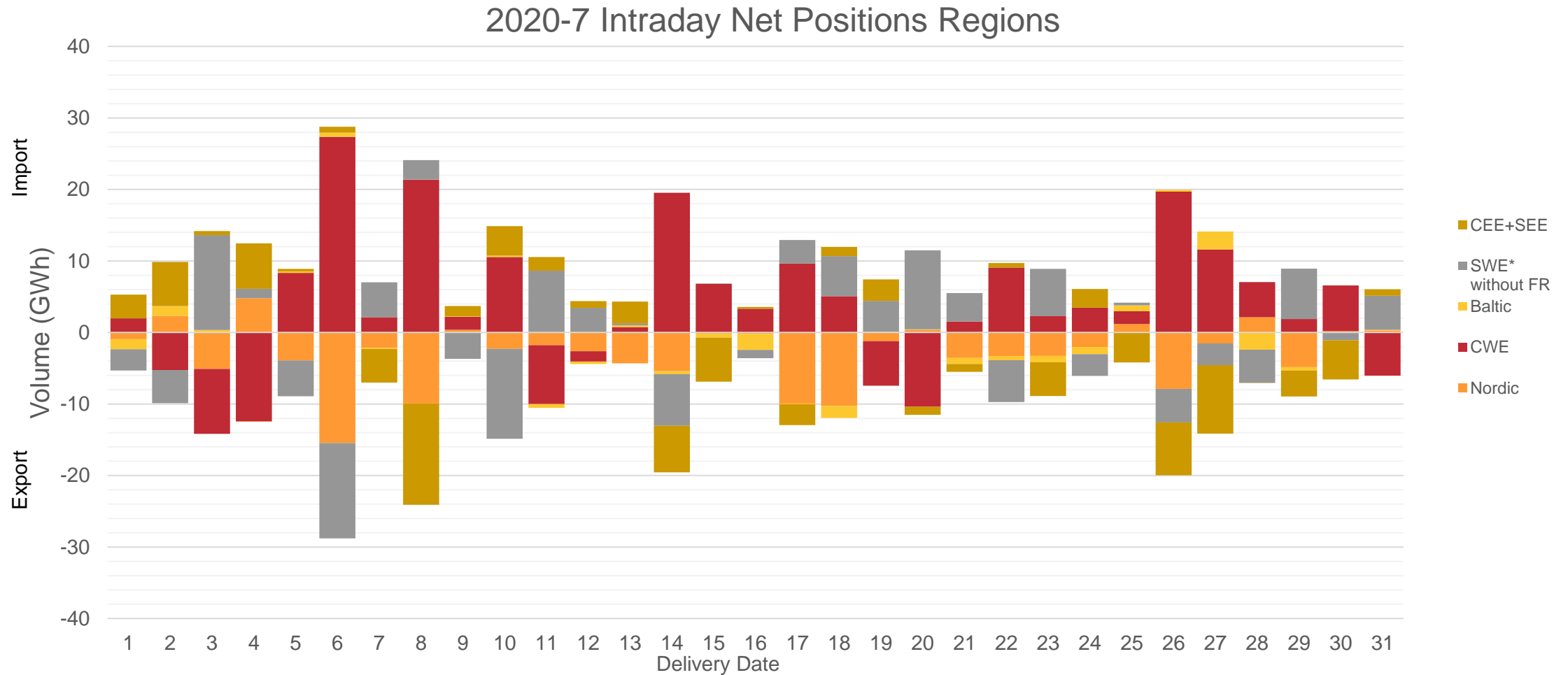


## 8. Net positions (6/10)

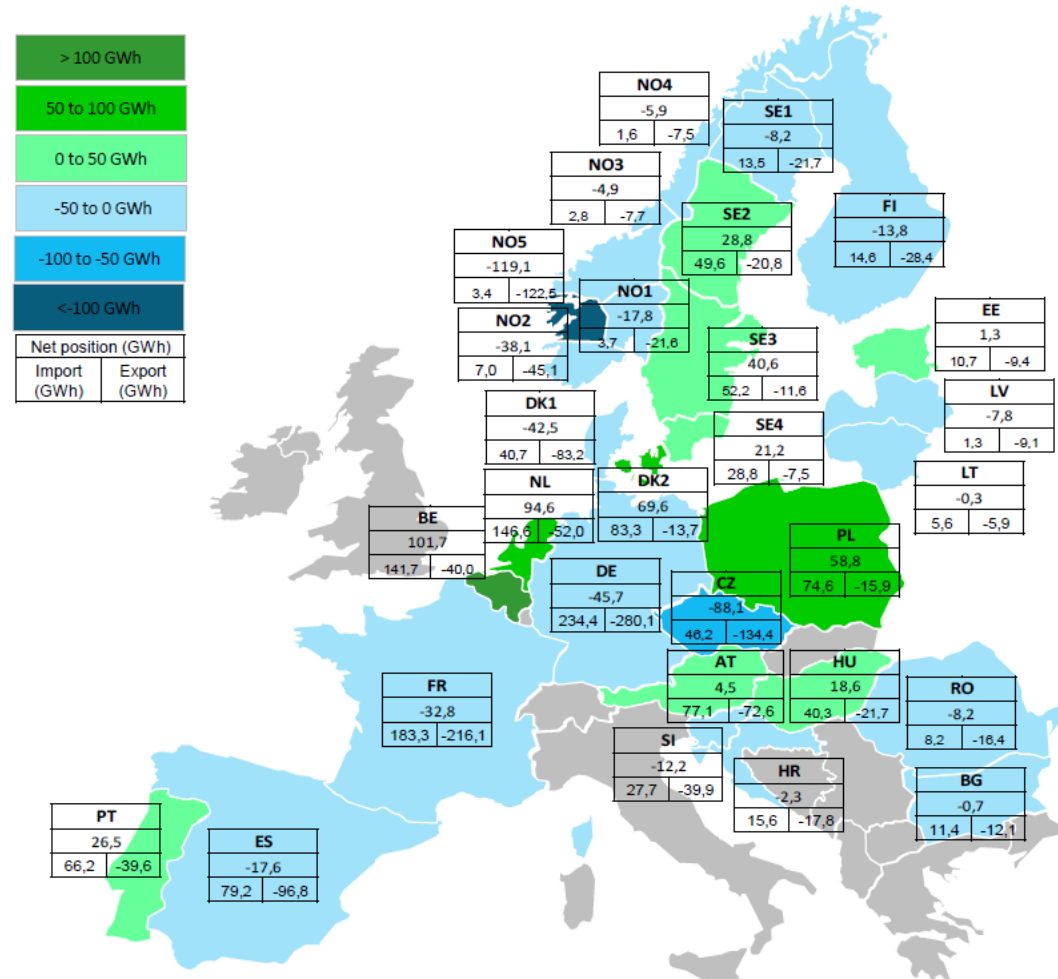
2020-7 Intraday Net Positions CEE+SEE



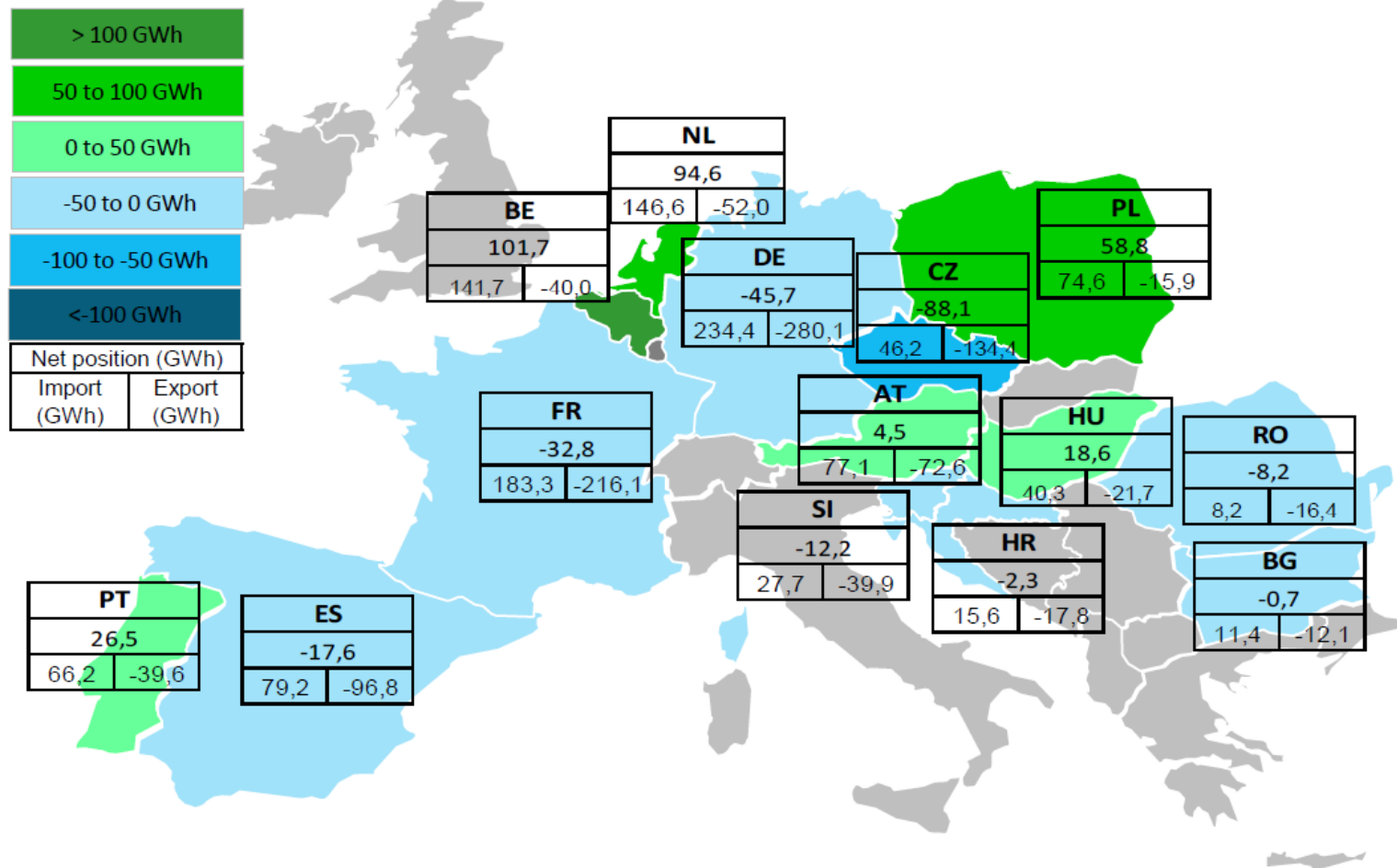
## 8. Net positions (7/10)



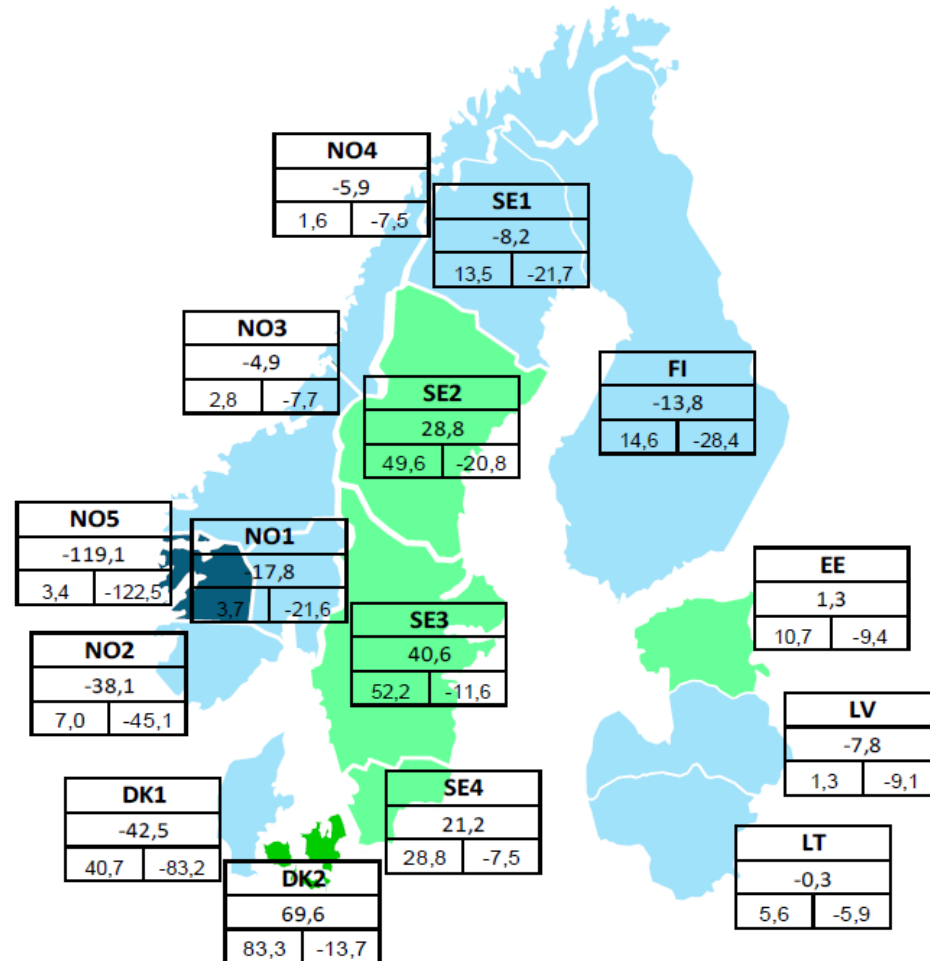
## 8. Net positions (8/10)



## 8. Net positions (9/10)

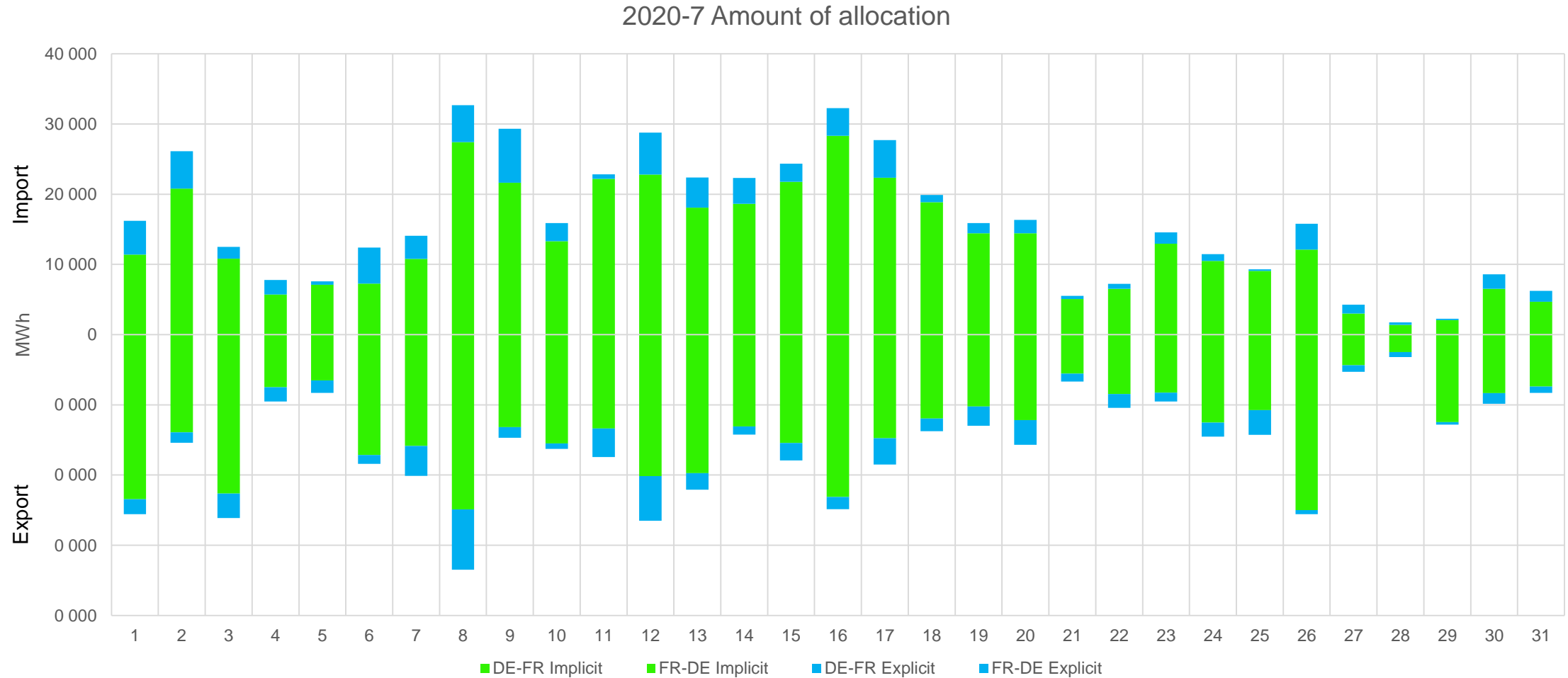


## 8. Net positions (10/10)



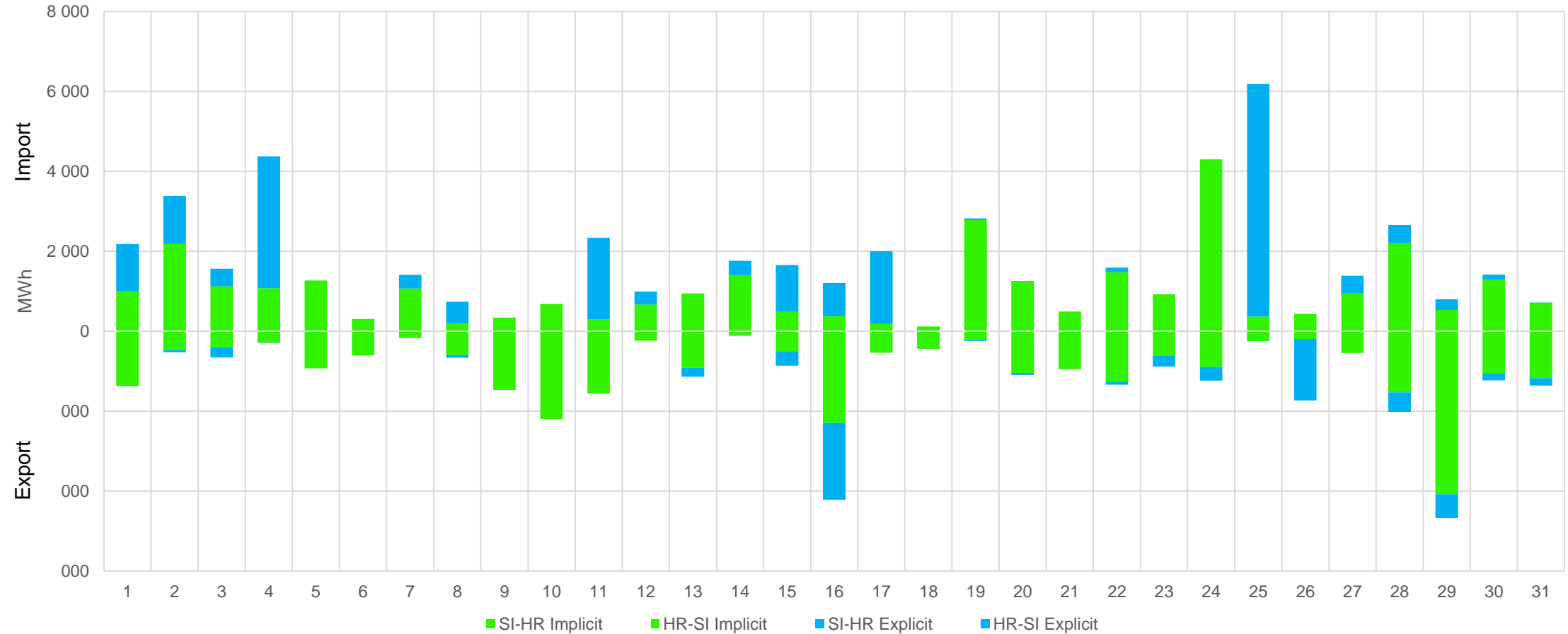


## 9. Total amount of explicit capacity allocation (1/2)

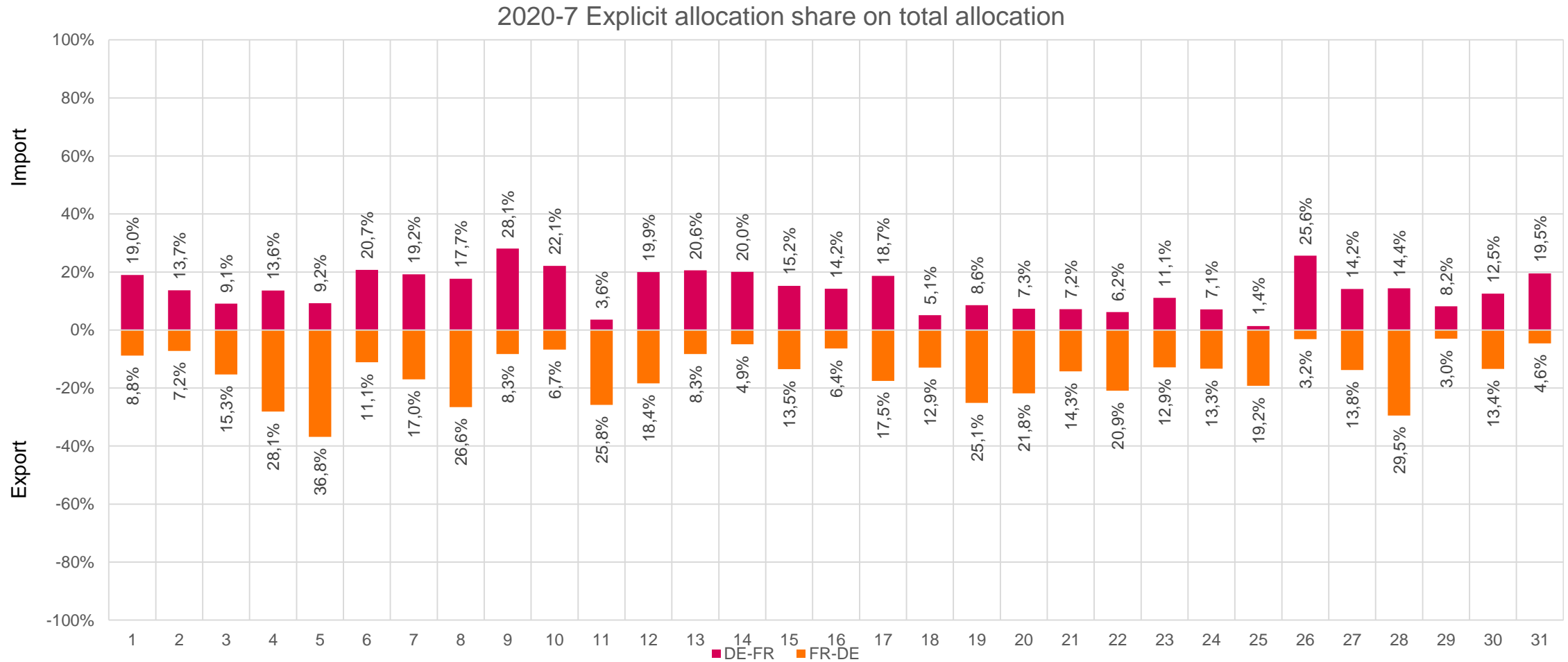


## 9. Total amount of explicit capacity allocation (2/2)

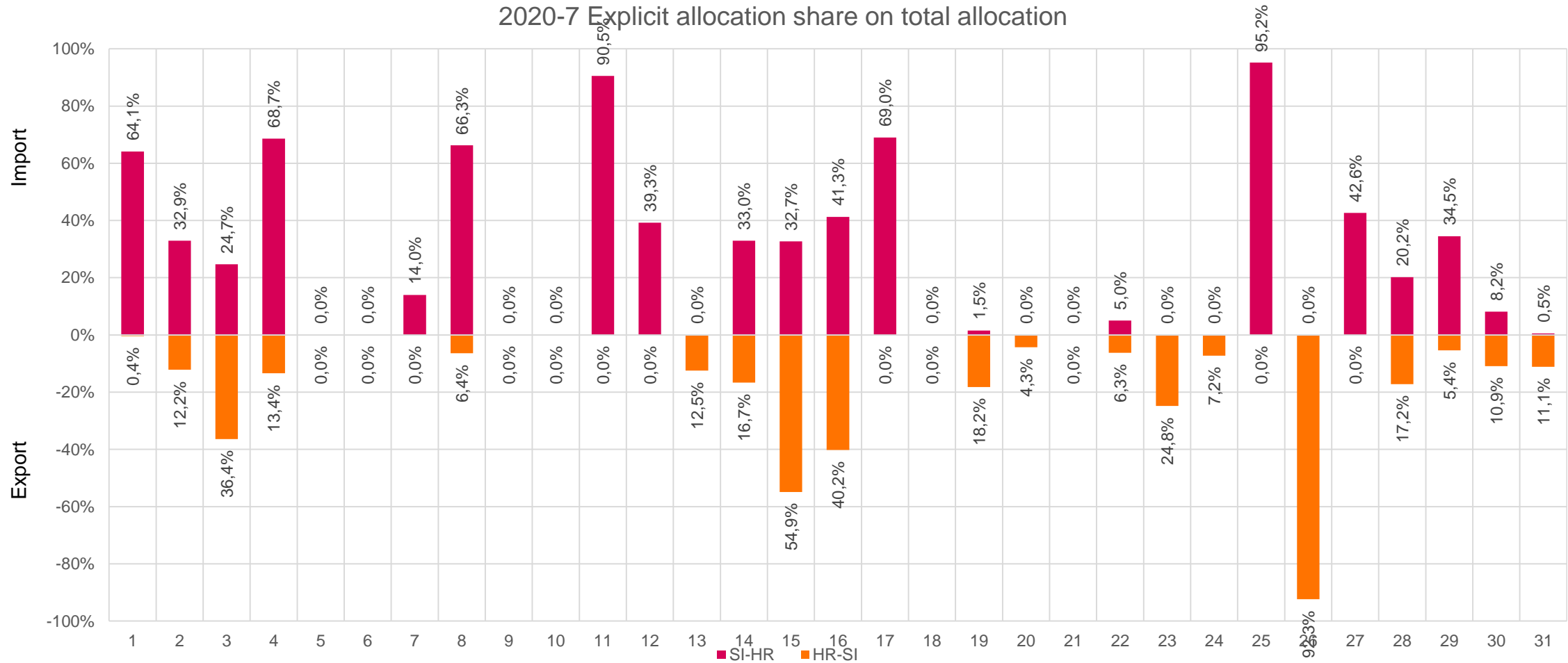
2020-7 Amount of allocation



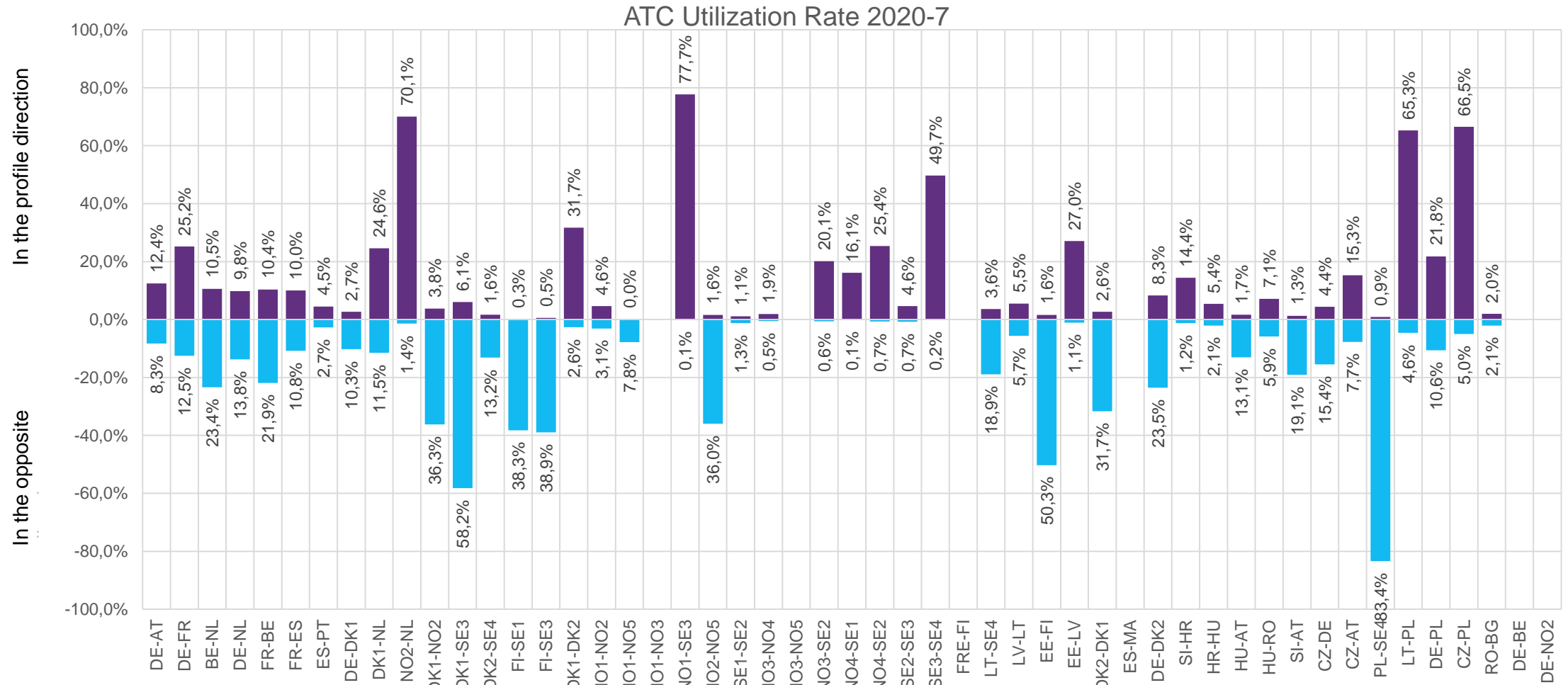
## 10. Explicit allocation share on total allocation (1/2)



## 10. Explicit allocation share on total allocation (2/2)



## 11. ATC utilization rate



## 12. Evolution of order events and trades

