

# SWE Intraday Capacity Calculation external report

---

This document reports results of the external parallel run from the 14/02/2022 to the 19/02/2022<sup>1</sup>.

## FR-ES NTCs

	2:30				5:30				9:30			
	ES-FR		FR-ES		ES-FR		FR-ES		ES-FR		FR-ES	
	D-2	IDCC 1st run	D-2	IDCC 1st run	D-2	IDCC 1st run	D-2	IDCC 1st run	D-2	IDCC 1st run	D-2	IDCC 1st run
14-02-2022	3237	3422	2636	2728	3376	3468	2543	2775	2636	2200	2400	2590
15-02-2022	2100	2050	1450	1450	1800	1950	2000	1850	2590	2400	2590	2682
16-02-2022	2497	2497	2300	2300	2400	2400	2300	2300	2400	2400	2682	2590
17-02-2022	2300	2300	2000	2000	1900	1900	2050	2050	1950	2497	2400	2682
18-02-2022	2543	2960	2497	2636	2400	3052	2590	2775	2050	2400	2775	2775
19-02-2022	2590	2775	2400	2728	2867	2960	2821	2913	2350	2543	2590	3098

\*Blue cells represent IT issues that do not require IDCC value replacement. Yellow cells represent IT issues that require IDCC values replacement by D-2 values.

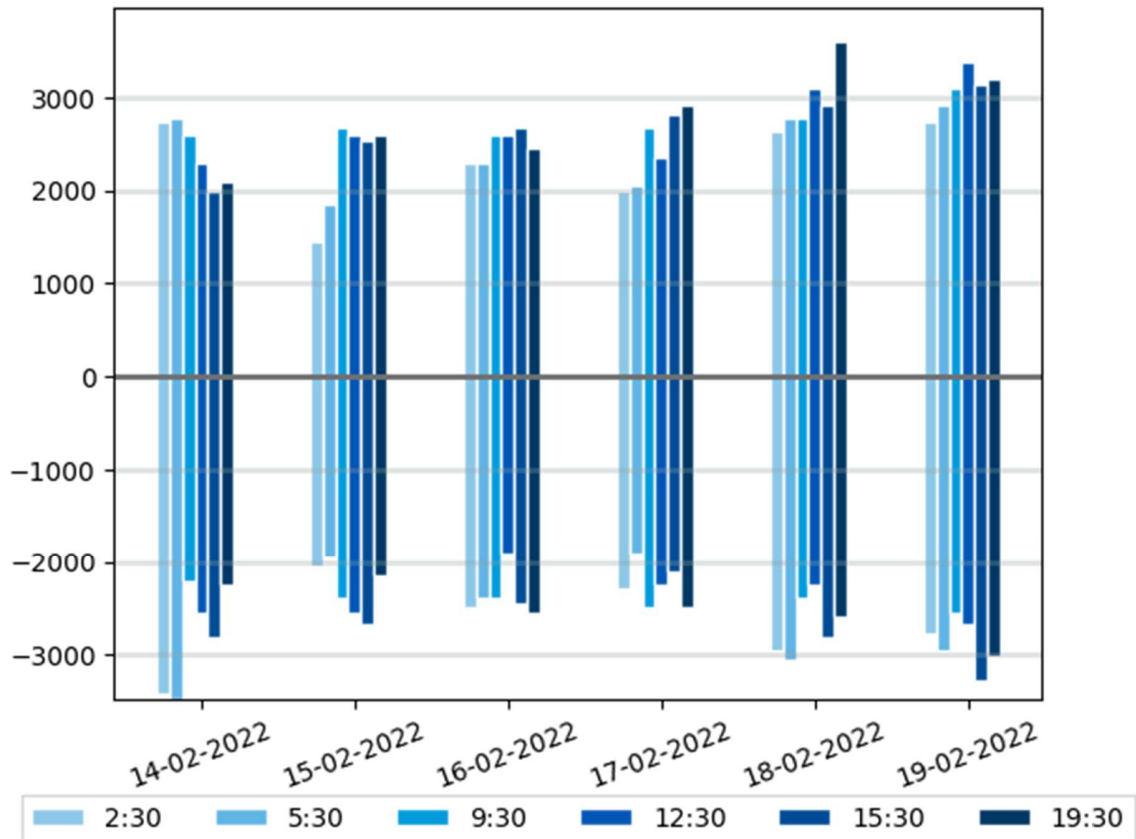
	12:30				15:30				19:30			
	ES-FR		FR-ES		ES-FR		FR-ES		ES-FR		FR-ES	
	D-2	IDCC 1st run	D-2	IDCC 1st run	D-2	IDCC 1st run	D-2	IDCC 1st run	D-2	IDCC 1st run	D-2	IDCC 1st run
14-02-2022	2000	2543	2636	2300	2636	2821	2636	2000	2728	2250	2250	2100
15-02-2022	2150	2543	2400	2590	2543	2682	2543	2543	2300	2150	2636	2590
16-02-2022	1900	1900	2590	2590	2497	2450	2590	2682	2497	2543	2497	2450
17-02-2022	2250	2250	2350	2350	2100	2100	2821	2821	2400	2497	2636	2913
18-02-2022	2100	2250	2867	3098	2300	2821	2867	2913	2450	2590	3607	3607
19-02-2022	2682	2682	3283	3376	3191	3283	3145	3145	3098	3006	2960	3191

\*Blue cells represent IT issues that do not require IDCC value replacement. Yellow cells represent IT issues that require IDCC values replacement by D-2 values.

---

<sup>1</sup> For exceptional reason due to IT issue, the results of the 20-02-2022 have not been added into this report. They will be added in the next one.

## FR-ES



### Comments

On FR-ES border, 18 computations failed during this week of external parallel run.  
14 of the failed computations were replaced by D-2 values as fallback procedure.

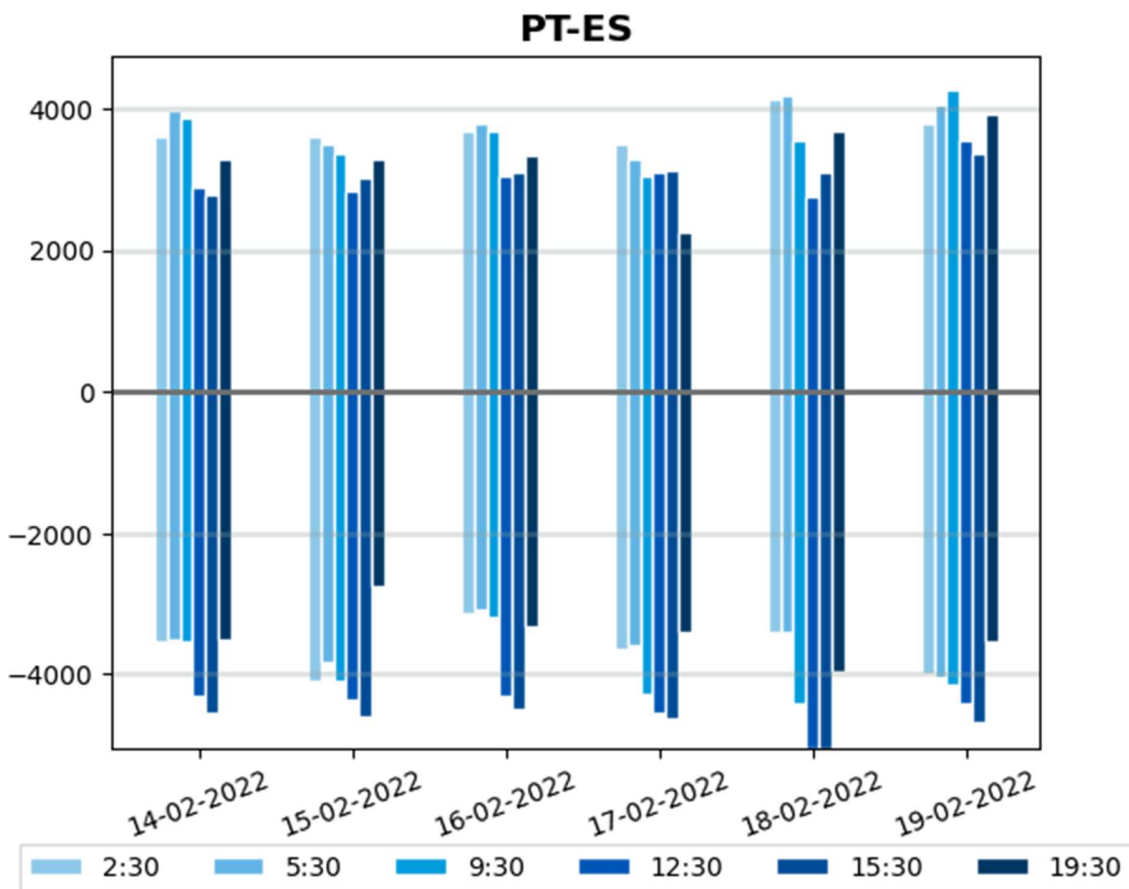
### PT-ES NTCs

	2:30				5:30				9:30			
	ES-PT		PT-ES		ES-PT		PT-ES		ES-PT		PT-ES	
	D-2	IDCC 1st run	D-2	IDCC 1st run	D-2	IDCC 1st run	D-2	IDCC 1st run	D-2	IDCC 1st run	D-2	IDCC 1st run
14-02-2022	3600	3555	3555	3600	3735	3510	3690	3960	3915	3555	3870	3870
15-02-2022	4275	4095	3420	3600	4050	3825	3510	3510	3915	4095	3465	3375
16-02-2022	3150	3150	3690	3690	3105	3105	3780	3780	3510	3195	3960	3690
17-02-2022	3645	3645	3510	3510	3600	3600	3285	3285	4005	4275	3105	3060
18-02-2022	4050	3420	3465	4140	3960	3420	3735	4185	4230	4410	3375	3555
19-02-2022	4005	4005	3960	3780	4050	4050	4050	4050	3735	4140	4500	4275

\*Blue cells represent IT issues that do not require IDCC value replacement. Yellow cells represent IT issues that require IDCC values replacement by D-2 values.

	12:30				15:30				19:30			
	ES-PT		PT-ES		ES-PT		PT-ES		ES-PT		PT-ES	
	D-2	IDCC 1st run	D-2	IDCC 1st run	D-2	IDCC 1st run	D-2	IDCC 1st run	D-2	IDCC 1st run	D-2	IDCC 1st run
14-02-2022	4140	4320	3177	2880	4320	4545	3110	2790	3555	3510	3780	3285
15-02-2022	4545	4365	3185	2835	4590	4590	3150	3015	3015	2745	3330	3285
16-02-2022	4320	4320	3066	3060	4500	4500	3150	3105	3124	3330	3465	3330
17-02-2022	4545	4545	3105	3105	4635	4635	3136	3136	3645	3420	2340	2250
18-02-2022	4770	5040	3120	2745	4905	5040	3150	3105	3600	3960	3735	3690
19-02-2022	4095	4410	3375	3555	4185	4680	3555	3375	3510	3555	4005	3915

\*Blue cells represent IT issues that do not require IDCC value replacement. Yellow cells represent IT issues that require IDCC values replacement by D-2 values.



#### Comments

On PT-ES border, 16 computations failed during this week of external parallel run. All failed computations were replaced by D-2 values as fallback procedure.

## Limiting elements FR-ES

Please find below the top limiting elements appearing more often over the period:

	CNEs and associated Contingencies	CNE Location	Frequency (%)
<b>#1</b>	<b>Branch</b>	<b>FR</b>	<b>56.5 %</b>
	N-1 Contingency 400 kV [FR]		56.6 %
<b>#2</b>	<b>Tie Line 400 kV</b>	<b>FR-ES</b>	<b>23.2 %</b>
	Contingency [ES]		21.2 %
	Contingency [ES]		2.0 %
<b>#3</b>	<b>Tie Line 220 kV</b>	<b>FR-ES</b>	<b>8.1 %</b>
	N-1 Contingency 400 kV [FR]		8.1 %
<b>#4</b>	<b>Branch</b>	<b>FR</b>	<b>6.1 %</b>
	N-1 Contingency 400 kV [ES-FR]		6.1 %
<b>#5</b>	<b>Branch 220 kV</b>	<b>ES</b>	<b>6.1 %</b>
	Base Case		6.1 %

## Limiting elements ES-FR

Please find below the top limiting elements appearing more often over the period:

	CNEs and associated Contingencies	CNE Location	Frequency (%)
<b>#1</b>	<b>Tie Line 220 kV</b>	<b>FR-ES</b>	<b>41.9 %</b>
	Base Case		3.4 %
	N-1 Contingency 400 kV [ES-FR]		38.5 %
<b>#2</b>	<b>Branch</b>	<b>FR</b>	<b>18.8 %</b>
	N-1 Contingency 400 kV [FR]		18.8 %
<b>#3</b>	<b>Tie Line 220 kV</b>	<b>FR-ES</b>	<b>18.8 %</b>
	Base Case		6.0 %
	N-1 Contingency 400 kV [FR]		11.1 %
	N-1 Contingency 400 kV [ES-FR]		1.7 %
<b>#4</b>	<b>Branch 220 kV</b>	<b>ES</b>	<b>11.1 %</b>
	N-2 Contingency 400 kV [ES]		11.1 %
<b>#5</b>	<b>Branch 220 kV</b>	<b>ES</b>	<b>6.0 %</b>
	Base Case		2.6 %
	N-1 Contingency 400 kV [ES-FR]		3.4 %
<b>#6</b>	<b>Branch 400 kV</b>	<b>ES</b>	<b>3.4 %</b>
	N-2 Contingency 220 kV [ES]		3.4 %

## Limiting elements PT-ES

Please find below the top limiting elements appearing more often over the period:

	CNEs and associated Contingencies	CNE Location	Frequency (%)
<b>#1</b>	<b>Tie Line 400 kV</b>	<b>ES-PT</b>	<b>48.0 %</b>
	N-2 Contingency 400 kV [ES-PT]		48.0 %
<b>#2</b>	<b>GLSK limitation</b>	<b>PT</b>	<b>28.8 %</b>
	Base Case		28.8 %

<b>#3</b>	<b>Angle Limitation</b>	<b>PT</b>	<b>23.2 %</b>
	N-2 Contingency 400 kV [ES-PT]		23.2 %

\*GLSK limitation row includes GLSK limitations and flow divergences divisions

### Limiting elements ES-PT

Please find below the top limiting elements appearing more often over the period:

	CNEs and associated Contingencies	CNE Location	Frequency (%)
<b>#1</b>	<b>Angle Limitation</b>	<b>PT</b>	<b>65.8 %</b>
	N-2 Contingency 400 kV [ES-PT]		65.8 %
<b>#2</b>	<b>Branch 400 kV</b>	<b>PT</b>	<b>34.2 %</b>
	N-2 Contingency 400 kV [ES-PT]		34.2 %

\*GLSK limitation row includes GLSK limitations and flow divergences divisions