

SWE Intraday Capacity Calculation external report

This document reports results of the external parallel run from the 13/12/2021 to the 19/12/2021.

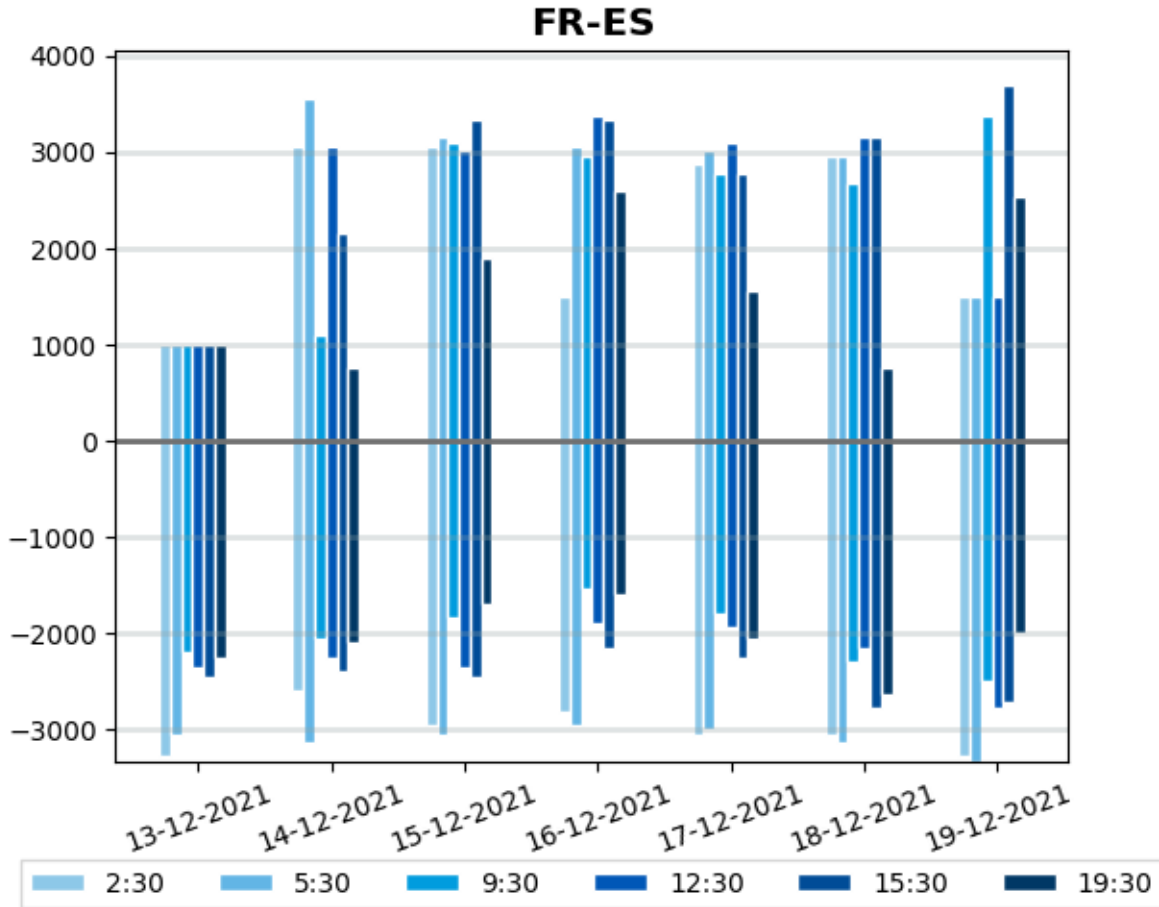
FR-ES NTCs

	2:30				5:30				9:30			
	ES-FR		FR-ES		ES-FR		FR-ES		ES-FR		FR-ES	
	D-2	IDCC 1st run	D-2	IDCC 1st run	D-2	IDCC 1st run	D-2	IDCC 1st run	D-2	IDCC 1st run	D-2	IDCC 1st run
13-12-2021	3283	3283	1000	1000	3052	3052	1000	1000	2200	2200	1000	1000
14-12-2021	3237	2590	1200	3052	3145	3145	1200	3561	2000	2050	1200	1100
15-12-2021	3052	2960	1200	3052	3052	3052	1200	3145	2150	1850	1200	3098
16-12-2021	2821	2821	1500	1500	2913	2960	1500	3052	2200	1550	1500	2960
17-12-2021	3052	3052	2867	2867	3006	3006	3006	3006	2250	1800	3191	2775
18-12-2021	2960	3052	3098	2960	3006	3145	3191	2960	2150	2300	3191	2682
19-12-2021	3283	3283	1500	1500	3330	3330	1500	1500	3006	2497	1500	3376

* Yellow cells represent IT issues for these borders and time stamps during the process. Blue cells represent the IT issues that do not imply replacement by D-2 values. Red cells represent errors when applying the D-2 values.

	12:30				15:30				19:30			
	ES-FR		FR-ES		ES-FR		FR-ES		ES-FR		FR-ES	
	D-2	IDCC 1st run	D-2	IDCC 1st run	D-2	IDCC 1st run	D-2	IDCC 1st run	D-2	IDCC 1st run	D-2	IDCC 1st run
13-12-2021	2350	2350	1000	1000	2450	2450	1000	1000	2250	2250	1000	1000
14-12-2021	2150	2250	1200	3052	2250	2400	1200	2150	2300	2100	1200	750
15-12-2021	2250	2350	1200	3006	2497	2450	1200	3330	2300	1700	1200	1900
16-12-2021	2450	1900	1500	3376	2590	2150	1500	3330	2400	1600	1500	2590
17-12-2021	2450	1950	3422	3098	2497	2250	3376	2775	2543	2050	3422	1550
18-12-2021	2100	2150	3191	3145	2728	2775	3237	3145	3283	2636	3052	750
19-12-2021	2775	2775	1500	1500	3052	2728	1500	3700	2960	2000	1500	2543

* Yellow cells represent IT issues for these borders and time stamps during the process. Blue cells represent the IT issues that do not imply replacement by D-2 values.



Comments

On FR-ES border, 39 computations failed during this week of external parallel run.
26 computations were replaced by D-2 values as fallback procedure.

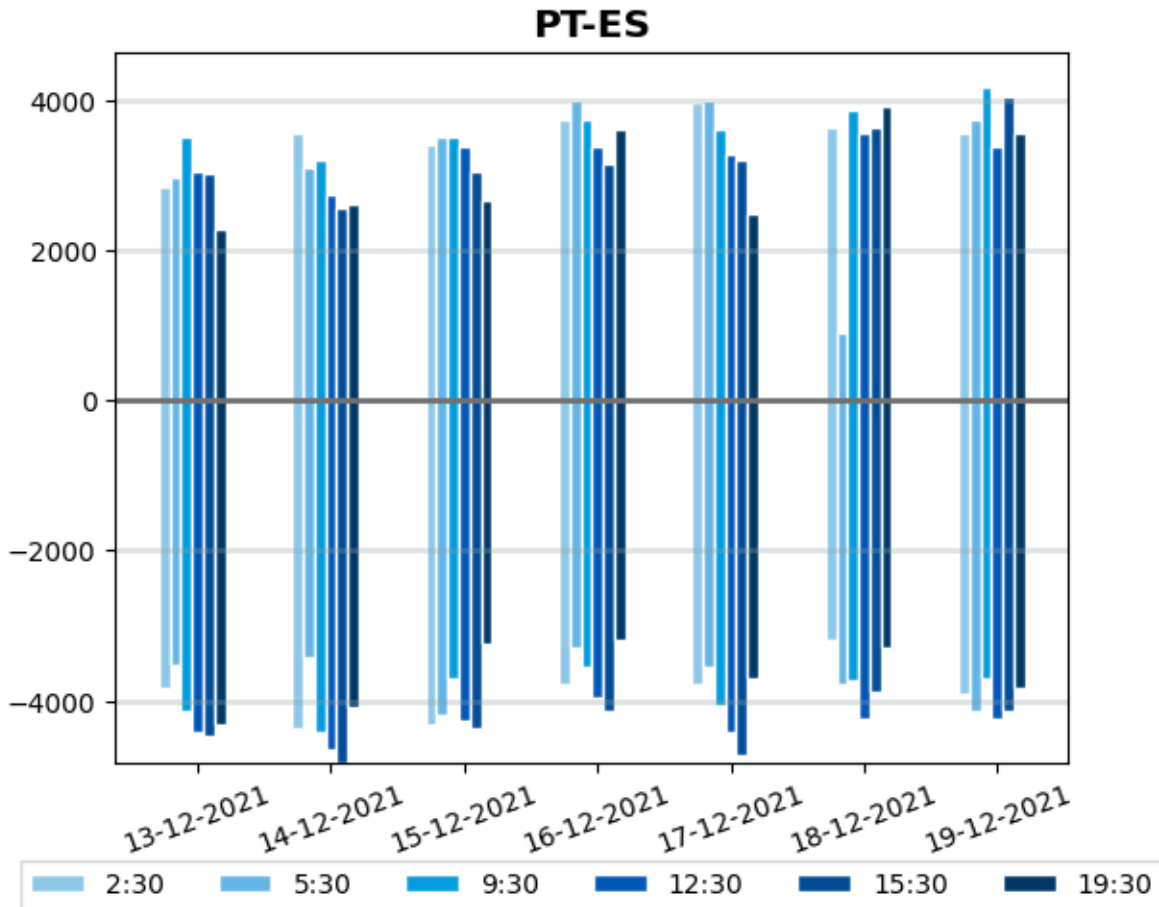
PT-ES NTCs

	2:30				5:30				9:30			
	ES-PT		PT-ES		ES-PT		PT-ES		ES-PT		PT-ES	
	D-2	IDCC 1st run	D-2	IDCC 1st run	D-2	IDCC 1st run	D-2	IDCC 1st run	D-2	IDCC 1st run	D-2	IDCC 1st run
13-12-2021	3825	3825	2835	2835	3510	3510	2970	2970	4140	4140	3510	3510
14-12-2021	3690	4365	3105	3555	3420	3420	3105	3105	4185	4410	3735	3195
15-12-2021	4320	4320	3420	3420	4185	4185	3510	3510	4410	3690	3600	3510
16-12-2021	3780	3780	3735	3735	3465	3285	3825	4005	3465	3555	3690	3735
17-12-2021	3780	3780	3960	3960	3555	3555	4005	4005	3510	4050	3690	3600
18-12-2021	3600	3195	3465	3645	4050	3780	3150	900	4095	3735	3510	3870
19-12-2021	3915	3915	3555	3555	4140	4140	3735	3735	3645	3690	3735	4185

* Yellow cells represent IT issues for these borders and time stamps during the process. Blue cells represent the IT issues that do not imply replacement by D-2 values.

	12:30				15:30				19:30			
	ES-PT		PT-ES		ES-PT		PT-ES		ES-PT		PT-ES	
	D-2	IDCC 1st run	D-2	IDCC 1st run	D-2	IDCC 1st run	D-2	IDCC 1st run	D-2	IDCC 1st run	D-2	IDCC 1st run
13-12-2021	4410	4410	3060	3060	4455	4455	3015	3015	4320	4320	2295	2295
14-12-2021	4455	4635	3240	2745	4500	4815	2925	2565	4455	4095	2475	2610
15-12-2021	4770	4275	3060	3375	4275	4365	3015	3060	4230	3240	2655	2655
16-12-2021	3645	3960	3420	3375	3780	4140	3105	3150	3690	3195	3375	3600
17-12-2021	3780	4410	3375	3285	3600	4725	3330	3195	3510	3690	2565	2475
18-12-2021	3960	4230	3465	3555	3870	3870	3555	3645	4005	3285	4095	3915
19-12-2021	4230	4230	3375	3375	4050	4140	3555	4050	3195	3825	3555	3555

* Yellow cells represent IT issues for these borders and time stamps during the process. Blue cells represent the IT issues that do not imply replacement by D-2 values. Red cells represent errors when applying the D-2 values.



Comments

On PT-ES border, 32 computations failed during this week of external parallel run. 31 computations were replaced by D-2 values as fallback procedure.

Limiting elements FR-ES

Please find below the top limiting elements appearing more often over the period:

	CNEs and associated Contingencies	CNE Location	Frequency (%)
#1	IT Issues		57.1 %
	Base Case		57.1 %
#2	Tie Line 400 kV	FR-ES	19.0 %
	Contingency [ES]		14.3 %
	N-1 Contingency 400 kV [FR-ES]		4.8 %
#3	Branch	FR	14.3 %
	N-1 Contingency 400 kV [FR-ES]		14.3 %
#4	Tie Line 220 kV	FR-ES	4.8 %
	N-1 Contingency 400 kV [FR-ES]		4.8 %
#5	Tie Line 400 kV	FR-ES	4.8 %
	N-1 Contingency 400 kV [FR-ES]		4.8 %

Limiting elements ES-FR

Please find below the top limiting elements appearing more often over the period:

	CNEs and associated Contingencies	CNE Location	Frequency (%)
#1	Tie Line 220 kV	FR-ES	39.6 %
	N-1 Contingency 400 kV [ES-FR]		39.6 %
#2	Branch	FR	27.1 %
	N-1 Contingency 400 kV [FR]		27.1 %
#3	Branch 220 kV	ES	14.6 %
	N-1 Contingency 400 kV [FR]		2.1 %
	N-1 Contingency 400 kV [FR-ES]		12.5 %
#4	Tie Line 400 kV	FR-ES	12.5 %
	Base Case		12.5 %
#5	Tie Line 225 kV	FR-ES	2.1 %
	Base Case		2.1 %

Limiting elements PT-ES

Please find below the top limiting elements appearing more often over the period:

	CNEs and associated Contingencies	CNE Location	Frequency (%)
#1	Tie Line 400 kV	ES-PT	58.8 %
	N-2 Contingency 400 kV [PT-ES]		58.8 %
#2	GLSK limitation		36.0 %
	Base Case		36.0 %
#3	Branch	PT	5.3 %
	N-2 Contingency 400 kV [PT-ES]		5.3 %

*GLSK limitation row includes GLSK limitations and flow divergences divisions

Limiting elements ES-PT

Please find below the top limiting elements appearing more often over the period:

	CNEs and associated Contingencies	CNE Location	Frequency (%)
#1	Branch	PT	76.3 %
	N-2 Contingency 400 kV [PT]		76.3 %
#2	Branch	PT	23.7 %
	N-2 Contingency 400 kV [PT]		23.7 %