

# SWE Intraday Capacity Calculation

## external report

This document reports results of the external parallel run from the 22/11/2021 to the 28/11/2021.

### FR-ES NTCs

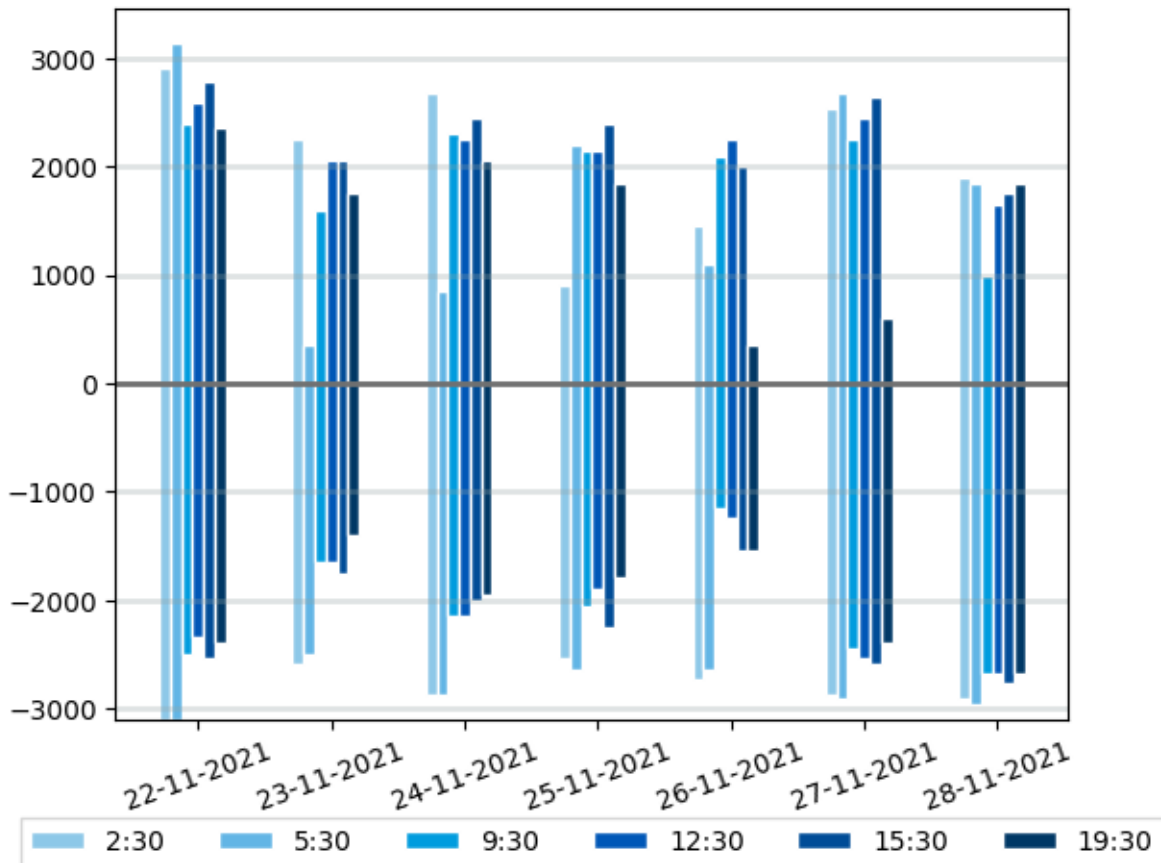
	2:30				5:30				9:30			
	ES-FR		FR-ES		ES-FR		FR-ES		ES-FR		FR-ES	
	D-2	IDCC 1st run	D-2	IDCC 1st run	D-2	IDCC 1st run	D-2	IDCC 1st run	D-2	IDCC 1st run	D-2	IDCC 1st run
22-11-2021	3098	3098	2913	2913	3098	3098	3145	3145	2497	2497	2400	2400
23-11-2021	2450	2590	1850	2250	2636	2497	2250	350	2000	1650	2100	1600
24-11-2021	2821	2867	2682	2682	2821	2867	2728	850	2150	2150	2300	2300
25-11-2021	2590	2543	2450	911	2543	2636	2682	2200	2100	2050	1300	2150
26-11-2021	2728	2728	2400	1450	2867	2636	2400	1100	1850	1150	2200	2100
27-11-2021	2867	2867	2543	2543	2913	2913	2682	2682	2682	2450	2400	2250
28-11-2021	2913	2913	1900	1900	2960	2960	1850	1850	2682	2682	1000	1000

\* Yellow cells represent IT issues for these borders and time stamps during the process. Blue cells represent the IT issues that do not imply replacement by D-2 values. Red cells represent errors when applying the D-2 values: this case did not happen this week.

	12:30				15:30				19:30			
	ES-FR		FR-ES		ES-FR		FR-ES		ES-FR		FR-ES	
	D-2	IDCC 1st run	D-2	IDCC 1st run	D-2	IDCC 1st run	D-2	IDCC 1st run	D-2	IDCC 1st run	D-2	IDCC 1st run
22-11-2021	2350	2350	2590	2590	2543	2543	2775	2775	2400	2400	2350	2350
23-11-2021	1900	1650	2350	2050	2250	1750	2590	2050	2050	1400	2200	1750
24-11-2021	2150	2150	2250	2250	2100	2000	2497	2450	1950	1950	2050	2050
25-11-2021	2000	1900	2200	2150	2050	2250	2300	2400	1800	1800	2000	1850
26-11-2021	1650	1250	2450	2250	1750	1550	2400	2000	2000	1550	2300	350
27-11-2021	2682	2543	2636	2450	2590	2590	2636	2636	2543	2400	2100	600
28-11-2021	2682	2682	1650	1650	2775	2775	1750	1750	2682	2682	1850	1850

\* Yellow cells represent IT issues for these borders and time stamps during the process. Blue cells represent the IT issues that do not imply replacement by D-2 values. Red cells represent errors when applying the D-2 values: this case did not happen this week.

## FR-ES



### Comments

On FR-ES border, 46 computations failed during this week of external parallel run.  
37 failed computations were replaced by D-2 values as fallback procedure.

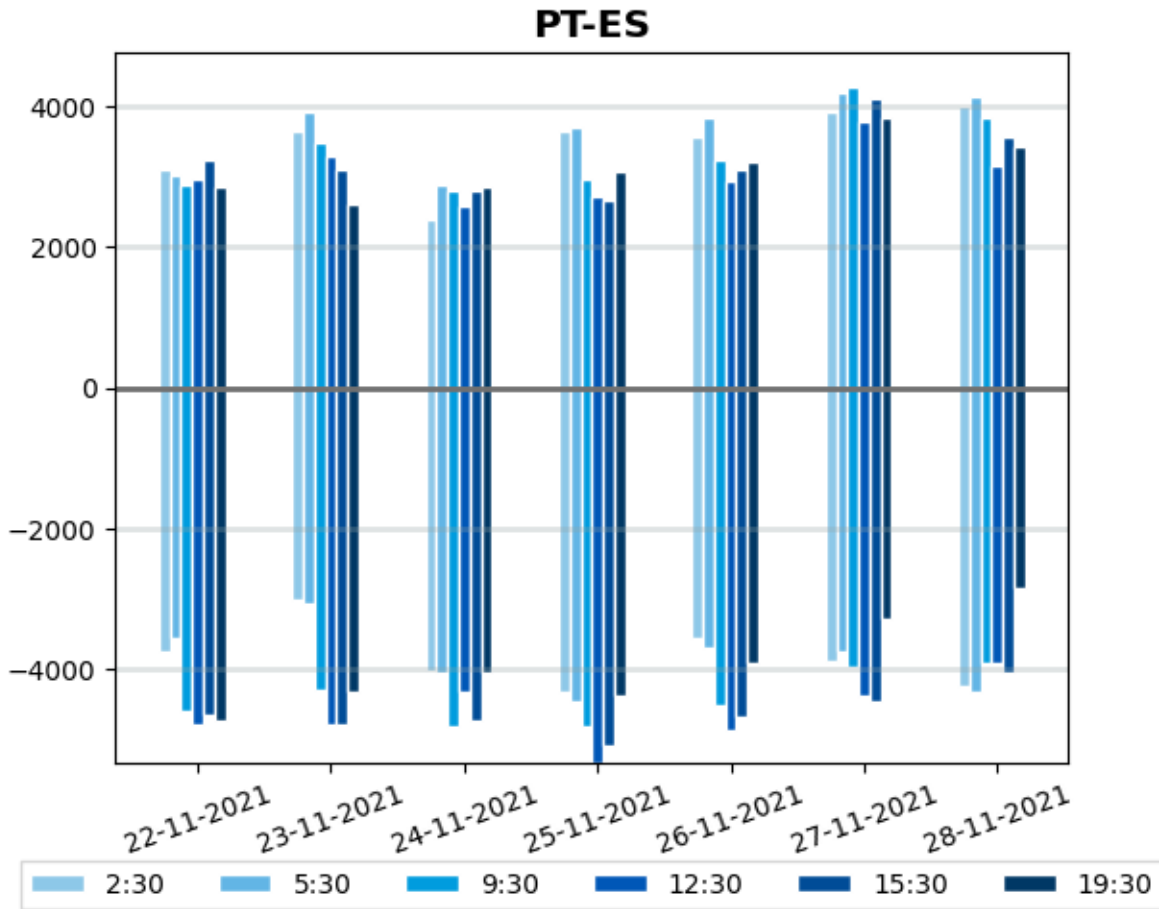
### PT-ES NTCs

	2:30				5:30				9:30			
	ES-PT		PT-ES		ES-PT		PT-ES		ES-PT		PT-ES	
	D-2	IDCC 1st run	D-2	IDCC 1st run	D-2	IDCC 1st run	D-2	IDCC 1st run	D-2	IDCC 1st run	D-2	IDCC 1st run
22-11-2021	3735	3735	3105	3105	3555	3555	3015	3015	4590	4590	2880	2880
23-11-2021	3150	3015	3735	3645	3420	3060	3780	3915	4185	4275	3150	3465
24-11-2021	4230	4005	3060	2385	4320	4050	2970	2880	4815	4815	2790	2790
25-11-2021	3960	4320	3735	3645	3960	4455	3735	3690	4500	4815	2880	2970
26-11-2021	3600	3555	3780	3555	3870	3690	3915	3825	4275	4500	3195	3240
27-11-2021	3870	3870	3915	3915	3735	3735	4185	4185	4140	3960	4140	4275
28-11-2021	4230	4230	4005	4005	4320	4320	4140	4140	3915	3915	3825	3825

\* Yellow cells represent IT issues for these borders and time stamps during the process. Blue cells represent the IT issues that do not imply replacement by D-2 values. Red cells represent errors when applying the D-2 values: this case did not happen this week.

	12:30				15:30				19:30			
	ES-PT		PT-ES		ES-PT		PT-ES		ES-PT		PT-ES	
	D-2	IDCC 1st run	D-2	IDCC 1st run	D-2	IDCC 1st run	D-2	IDCC 1st run	D-2	IDCC 1st run	D-2	IDCC 1st run
22-11-2021	4770	4770	2970	2970	4635	4635	3240	3240	4725	4725	2835	2835
23-11-2021	4365	4770	3150	3285	4455	4770	2970	3105	4905	4320	2700	2610
24-11-2021	4320	4320	2565	2565	4050	4725	2970	2790	4050	4050	2835	2835
25-11-2021	4860	5310	2655	2700	4635	5085	2925	2655	4545	4365	3060	3060
26-11-2021	4635	4860	2835	2925	4500	4680	3195	3105	4185	3915	3240	3195
27-11-2021	4500	4365	3870	3780	4455	4455	4095	4095	3060	3285	4095	3825
28-11-2021	3915	3915	3150	3150	4050	4050	3555	3555	2835	2835	3420	3420

\* Yellow cells represent IT issues for these borders and time stamps during the process. Blue cells represent the IT issues that do not imply replacement by D-2 values. Red cells represent errors when applying the D-2 values: this case did not happen this week.



#### Comments

On PT-ES border, 30 computations failed during this week of external parallel run. All failed computations were replaced by D-2 values as fallback procedure.

## Limiting elements FR-ES

Please find below the top limiting elements appearing more often over the period:

	CNEs and associated Contingencies	CNE Location	Frequency (%)
<b>#1</b>	<b>Branch</b>	<b>FR</b>	<b>38.6 %</b>
	N-1 Contingency [FR]		38.6 %
<b>#2</b>	<b>IT Issue</b>		<b>25.0 %</b>
	Base Case		25.0 %
<b>#3</b>	<b>Tie Line 400 kV</b>	<b>FR-ES</b>	<b>13.6 %</b>
	N-1 Contingency [FR-ES]		13.6 %
<b>#4</b>	<b>Tie Line 225 kV</b>	<b>FR-ES</b>	<b>13.6 %</b>
	N-1 Contingency [FR]		13.6 %
<b>#5</b>	<b>Tie Line</b>	<b>FR-ES</b>	<b>9.1 %</b>
	Contingency [ES]		2.3 %
	N-1 Contingency [FR]		6.8 %

## Limiting elements ES-FR

Please find below the top limiting elements appearing more often over the period:

	CNEs and associated Contingencies	CNE Location	Frequency (%)
<b>#1</b>	<b>Tie Line</b>	<b>FR-ES</b>	<b>41.7 %</b>
	N-1 Contingency 400 kV [ES-FR]		41.7 %
<b>#2</b>	<b>Tie Line</b>	<b>FR-ES</b>	<b>28.6 %</b>
	Base Case		2.4 %
	N-1 Contingency [FR]		10.7 %
	N-1 Contingency 400 kV [ES-FR]		11.9 %
	N-1 Contingency 400 kV [ES-FR]		3.6 %
<b>#3</b>	<b>Branch</b>	<b>FR</b>	<b>25.0 %</b>
	N-1 Contingency [FR]		25.0 %
<b>#4</b>	<b>Branch</b>	<b>FR</b>	<b>3.6 %</b>
	Base Case		3.6 %
<b>#5</b>	<b>Branch 220 kV</b>	<b>ES</b>	<b>1.2 %</b>
	Base Case		1.2 %

## Limiting elements PT-ES

Please find below the top limiting elements appearing more often over the period:

	CNEs and associated Contingencies	CNE Location	Frequency (%)
<b>#1</b>	<b>Tie Line 400 kV</b>	<b>ES-PT</b>	<b>81.3 %</b>
	N-2 Contingency 400 kV [PT-ES]		81.3 %
<b>#2</b>	<b>GLSK limitation</b>		<b>14.9 %</b>
	Base Case		14.9 %
<b>#3</b>	<b>Tie Line</b>	<b>PT</b>	<b>3.7 %</b>
	N-2 Contingency 400 kV [PT-ES]		3.7 %

\*GLSK limitation row includes GLSK limitations and flow divergences divisions

## Limiting elements ES-PT

Please find below the top limiting elements appearing more often over the period:

	CNEs and associated Contingencies	CNE Location	Frequency (%)
<b>#1</b>	<b>Branch</b>	<b>PT</b>	<b>51.5 %</b>
	N-2 Contingency 400 kV [ES-PT]		51.5 %
<b>#2</b>	<b>Branch</b>	<b>PT</b>	<b>45.5 %</b>
	N-2 Contingency 400 kV [ES-PT]		45.5 %
<b>#3</b>	<b>Tie Line 400 kV</b>	<b>ES-PT</b>	<b>3.0 %</b>
	N-2 Contingency 400 kV [ES-PT]		3.0 %

\*GLSK limitation row includes GLSK limitations and flow divergences divisions