

SWE Intraday Capacity Calculation

external report

This document reports results of the external parallel run from the 29/11/2021 to the 05/12/2021.

FR-ES NTCs

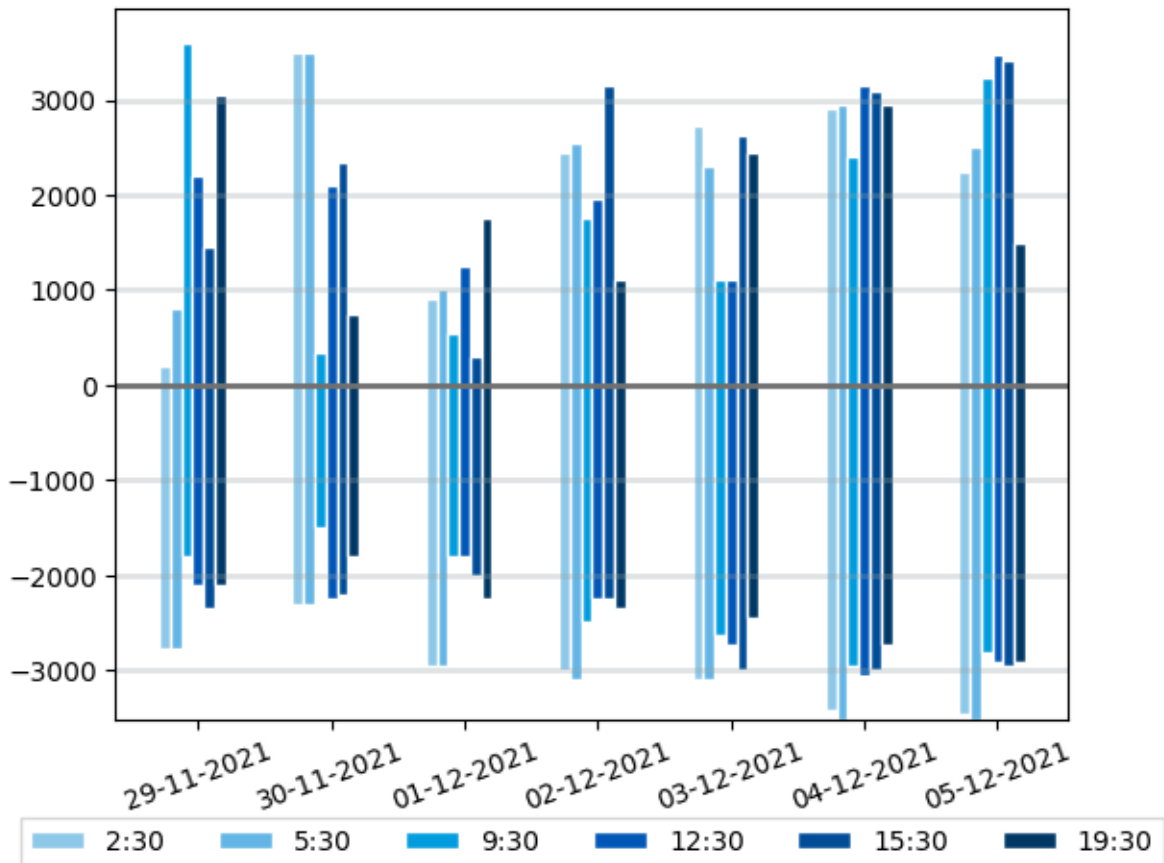
	2:30				5:30				9:30			
	ES-FR		FR-ES		ES-FR		FR-ES		ES-FR		FR-ES	
	D-2	IDCC 1st run	D-2	IDCC 1st run	D-2	IDCC 1st run	D-2	IDCC 1st run	D-2	IDCC 1st run	D-2	IDCC 1st run
29-11-2021	2821	2775	250	200	2821	2775	2400	800	1950	1800	1950	3607
30-11-2021	2300	2300	3500	3500	2300	2300	3500	3500	2450	1500	400	350
01-12-2021	2913	2960	1750	900	2913	2960	1750	1000	2400	1800	1800	550
02-12-2021	3237	3006	2350	2450	3330	3098	2590	2543	2543	2497	2867	1750
03-12-2021	3237	3098	2728	2728	3283	3098	2775	2300	2590	2636	2050	1100
04-12-2021	3283	3422	2728	2913	3515	3515	2960	2960	2867	2960	2913	2400
05-12-2021	1400	3468	3006	2250	1400	3515	1900	2497	2821	2821	3237	3237

* Yellow cells represent IT issues for these borders and time stamps during the process. Blue cells represent the IT issues that do not imply replacement by D-2 values. Red cells represent errors when applying the D-2 values.

	12:30				15:30				19:30			
	ES-FR		FR-ES		ES-FR		FR-ES		ES-FR		FR-ES	
	D-2	IDCC 1st run	D-2	IDCC 1st run	D-2	IDCC 1st run	D-2	IDCC 1st run	D-2	IDCC 1st run	D-2	IDCC 1st run
29-11-2021	1950	2100	2450	2200	2000	2350	2200	1450	1950	2100	450	3052
30-11-2021	2400	2250	2497	2100	2450	2200	2450	2350	2100	1800	1750	750
01-12-2021	2100	1800	2150	1250	2350	2000	2200	300	2250	2250	1750	1750
02-12-2021	2100	2250	3145	1950	2250	2250	3145	3145	2250	2350	2400	1100
03-12-2021	2450	2728	2682	1100	2682	3006	2636	2636	2450	2450	2450	2450
04-12-2021	3052	3052	3145	3145	3006	3006	3098	3098	2728	2728	2960	2960
05-12-2021	2913	2913	3468	3468	2960	2960	3422	3422	2728	2913	1500	1500

* Yellow cells represent IT issues for these borders and time stamps during the process. Blue cells represent the IT issues that do not imply replacement by D-2 values. Red cells represent errors when applying the D-2 values.

FR-ES



Comments

On FR-ES border, 42 computations failed during this week of external parallel run.
25 computations were replaced by D-2 values as fallback procedure.

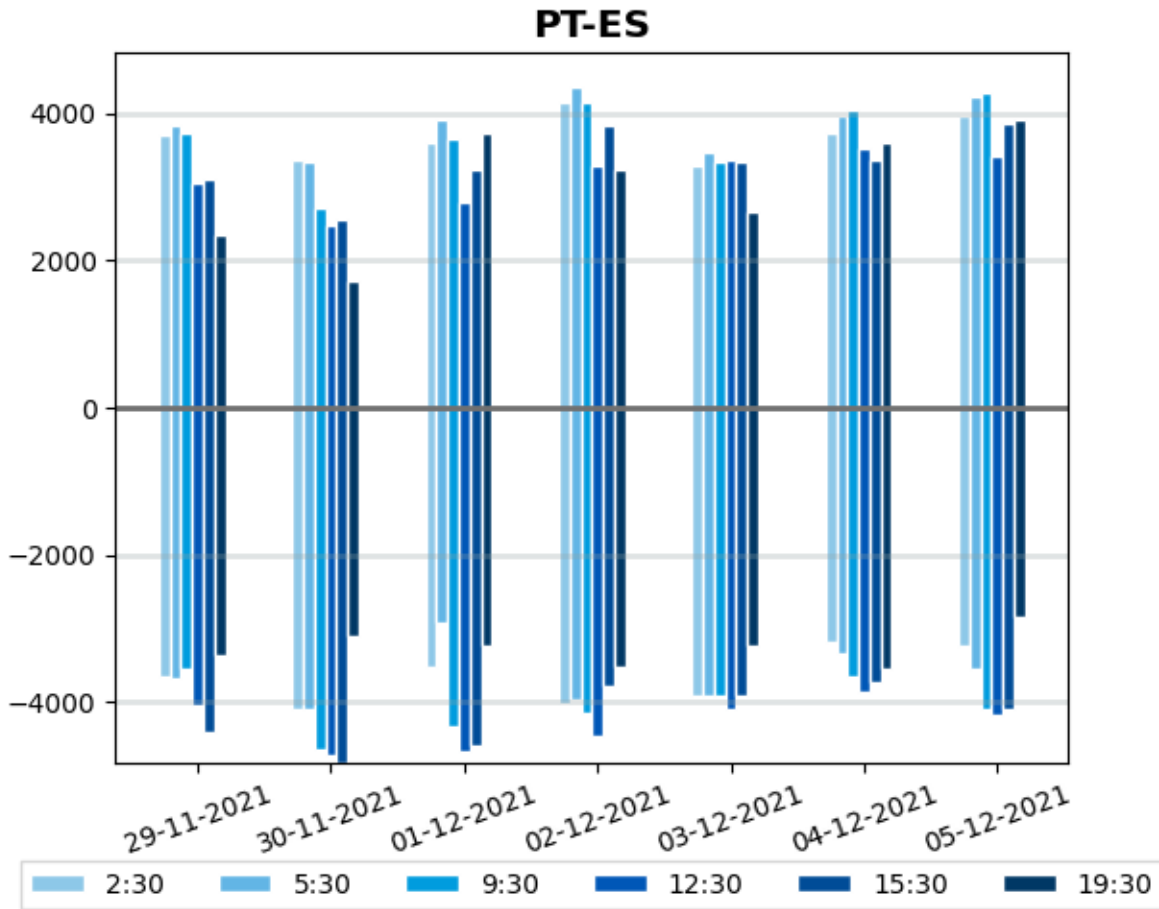
PT-ES NTCs

	2:30				5:30				9:30			
	ES-PT		PT-ES		ES-PT		PT-ES		ES-PT		PT-ES	
	D-2	IDCC 1st run	D-2	IDCC 1st run	D-2	IDCC 1st run	D-2	IDCC 1st run	D-2	IDCC 1st run	D-2	IDCC 1st run
29-11-2021	3870	3645	4005	3690	3960	3690	4005	3825	3150	3555	3600	3735
30-11-2021	1700	4095	4100	3375	1700	4095	4100	3330	4500	4635	2880	2700
01-12-2021	3375	3510	3240	3600	3195	2925	3330	3915	3825	4320	3690	3645
02-12-2021	4050	4005	4230	4140	3870	3960	4320	4365	3870	4140	4185	4140
03-12-2021	4005	3915	3510	3285	3915	3915	3645	3465	4005	3915	3285	3330
04-12-2021	3375	3195	3510	3735	3330	3330	3960	3960	3870	3645	3690	4050
05-12-2021	2500	3240	3899	3960	4185	3555	3870	4230	4095	4095	4275	4275

* Yellow cells represent IT issues for these borders and time stamps during the process. Blue cells represent the IT issues that do not imply replacement by D-2 values. Red cells represent errors when applying the D-2 values.

	12:30				15:30				19:30			
	ES-PT		PT-ES		ES-PT		PT-ES		ES-PT		PT-ES	
	D-2	IDCC 1st run	D-2	IDCC 1st run	D-2	IDCC 1st run	D-2	IDCC 1st run	D-2	IDCC 1st run	D-2	IDCC 1st run
29-11-2021	3735	4050	3060	3060	3465	4410	3420	3105	3465	3375	2520	2340
30-11-2021	4545	4725	2250	2475	4545	4815	2295	2565	3330	3105	1755	1710
01-12-2021	4320	4680	3330	2790	4320	4590	3600	3240	3240	3240	3735	3735
02-12-2021	4140	4455	3690	3285	3780	3780	3825	3825	3240	3510	3555	3240
03-12-2021	4230	4095	3060	3375	3915	3915	3330	3330	3780	3240	2790	2655
04-12-2021	3870	3870	3510	3510	3735	3735	3375	3375	3555	3555	3600	3600
05-12-2021	4185	4185	3420	3420	4095	4095	3870	3870	3015	2835	3870	3915

* Yellow cells represent IT issues for these borders and time stamps during the process. Blue cells represent the IT issues that do not imply replacement by D-2 values. Red cells represent errors when applying the D-2 values.



Comments

On PT-ES border, 24 computations failed during this week of external parallel run. 19 computations were replaced by D-2 values as fallback procedure.

Limiting elements FR-ES

Please find below the top limiting elements appearing more often over the period:

	CNEs and associated Contingencies	CNE Location	Frequency (%)
#1	IT Issue		60.7 %
	Base Case		60.7 %
#2	Branch 400 kV	FR	25.0 %
	N-1 Contingency 400 kV [FR]		25.0 %
#3	Branch	FR	14.3 %
	Base Case		14.3 %

Limiting elements ES-FR

Please find below the top limiting elements appearing more often over the period:

	CNEs and associated Contingencies	CNE Location	Frequency (%)
#1	Branch	FR	29.0 %
	N-1 Contingency 400 kV[FR]		29.0 %
#2	Tie Line 220 kV	FR-ES	24.2 %
	N-1 Contingency 400 kV [ES-FR]		24.2 %
#3	Tie Line 220 kV	FR-ES	24.2 %
	N-1 Contingency 400 kV [FR]		16.1 %
	N-1 Contingency 400 kV [ES-FR]		6.5 %
	N-1 Contingency 400 kV [ES-FR]		1.6 %
#4	Branch 220 kV	ES	9.7 %
	Base Case		9.7 %
#5	Branch	FR	9.7 %
	Base Case		9.7 %

Limiting elements PT-ES

Please find below the top limiting elements appearing more often over the period:

	CNEs and associated Contingencies	CNE Location	Frequency (%)
#1	Tie Line 400 kV	ES-PT	47.3 %
	N-2 Contingency 400 kV [PT-ES]		47.3 %
#2	GLSK limitation		28.6 %
	Base Case		28.6 %
#3	Angle Limitation	PT	24.1 %
	N-2 Contingency 400 kV [PT-ES]		17.9 %
	N-1 Contingency 400 kV [PT-ES]		6.2 %

*GLSK limitation row includes GLSK limitations and flow divergences divisions

Limiting elements ES-PT

Please find below the top limiting elements appearing more often over the period:

	CNEs and associated Contingencies	CNE Location	Frequency (%)
#1	Branch 400 kV	PT	41.5 %
	N-2 Contingency 400 kV [ES-PT]		41.5 %
#2	Angle Limitation	PT	37.7 %
	N-2 Contingency 400 kV [FR]		37.7 %
#3	Tie Line 400 kV	ES-PT	11.3 %
	N-2 Contingency 400 kV [ES-PT]		11.3 %

*GLSK limitation row includes GLSK limitations and flow divergences divisions