

SWE Intraday Capacity Calculation external report

This document reports results of the external parallel run from the 06/12/2021 to the 12/12/2021.

FR-ES NTCs

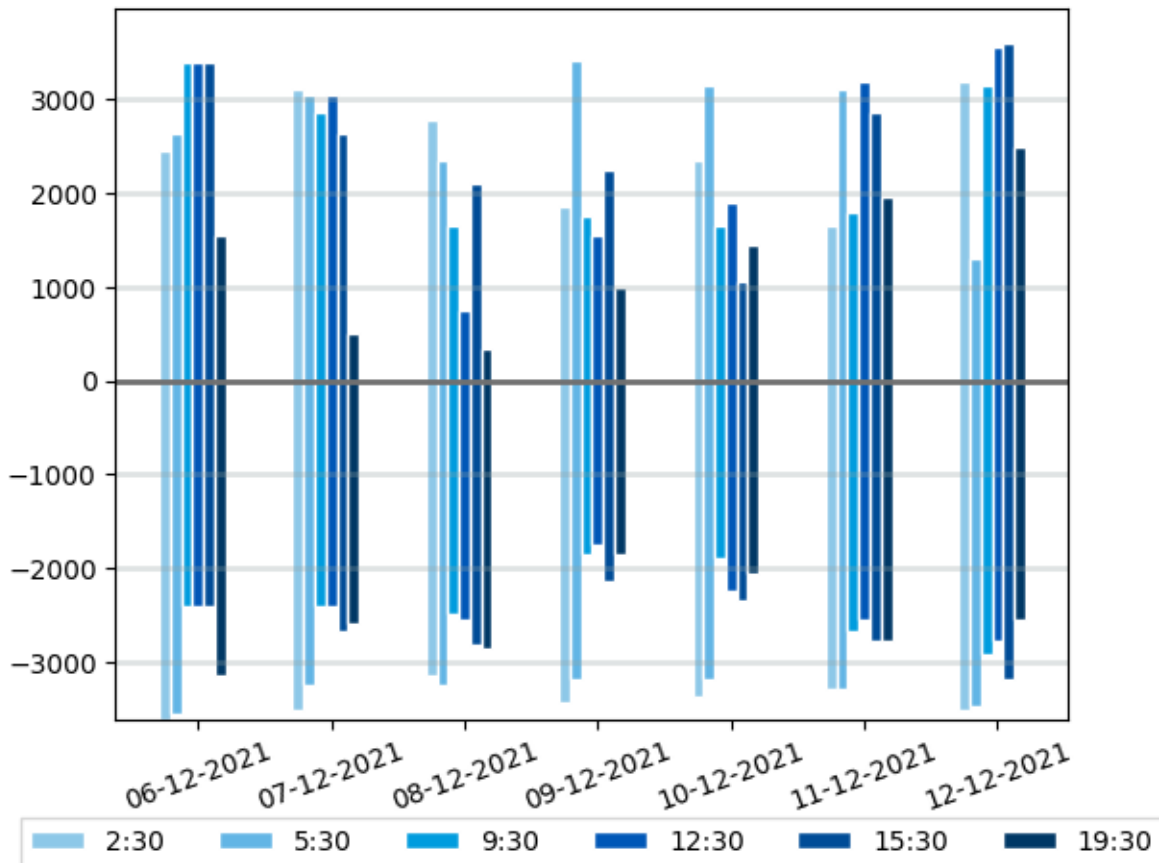
	2:30				5:30				9:30			
	ES-FR		FR-ES		ES-FR		FR-ES		ES-FR		FR-ES	
	D-2	IDCC 1st run	D-2	IDCC 1st run	D-2	IDCC 1st run	D-2	IDCC 1st run	D-2	IDCC 1st run	D-2	IDCC 1st run
06-12-2021	2800	3607	3200	2450	2800	3561	3200	2636	2400	2400	3400	3400
07-12-2021	3515	3515	1250	3098	3422	3237	1250	3052	2300	2400	1250	2867
08-12-2021	3098	3145	1500	2775	3330	3237	1500	2350	2590	2497	1500	1650
09-12-2021	3237	3422	1500	1850	3191	3191	1500	3422	2050	1850	1500	1750
10-12-2021	3330	3376	1550	2350	3191	3191	1550	3145	2400	1900	1550	1650
11-12-2021	3237	3283	1500	1650	3283	3283	1500	3098	2682	2682	1500	1800
12-12-2021	3515	3515	1500	3191	3607	3468	1500	1300	2999	2913	1500	3145

* Yellow cells represent IT issues for these borders and time stamps during the process. Blue cells represent the IT issues that do not imply replacement by D-2 values. Red cells represent errors when applying the D-2 values.

	12:30				15:30				19:30			
	ES-FR		FR-ES		ES-FR		FR-ES		ES-FR		FR-ES	
	D-2	IDCC 1st run	D-2	IDCC 1st run	D-2	IDCC 1st run	D-2	IDCC 1st run	D-2	IDCC 1st run	D-2	IDCC 1st run
06-12-2021	2400	2400	3400	3400	2400	2400	3400	3400	2400	3145	3400	1550
07-12-2021	2000	2400	1250	3052	2497	2682	1250	2636	2450	2590	1250	500
08-12-2021	2543	2543	1500	750	2636	2817	1500	2096	2450	2867	1400	350
09-12-2021	1850	1750	1500	1550	2350	2150	1500	2250	2150	1850	1500	1000
10-12-2021	2300	2250	1550	1900	2450	2350	1550	1050	2200	2050	1550	1450
11-12-2021	2543	2543	1500	3191	2300	2775	1500	2867	2590	2775	1500	1950
12-12-2021	2775	2775	1500	3561	3191	3191	1500	3607	3052	2543	1500	2497

* Yellow cells represent IT issues for these borders and time stamps during the process. Blue cells represent the IT issues that do not imply replacement by D-2 values. Red cells represent errors when applying the D-2 values.

FR-ES



Comments

On FR-ES border, 41 computations failed during this week of external parallel run.
8 computations were replaced by D-2 values as fallback procedure.

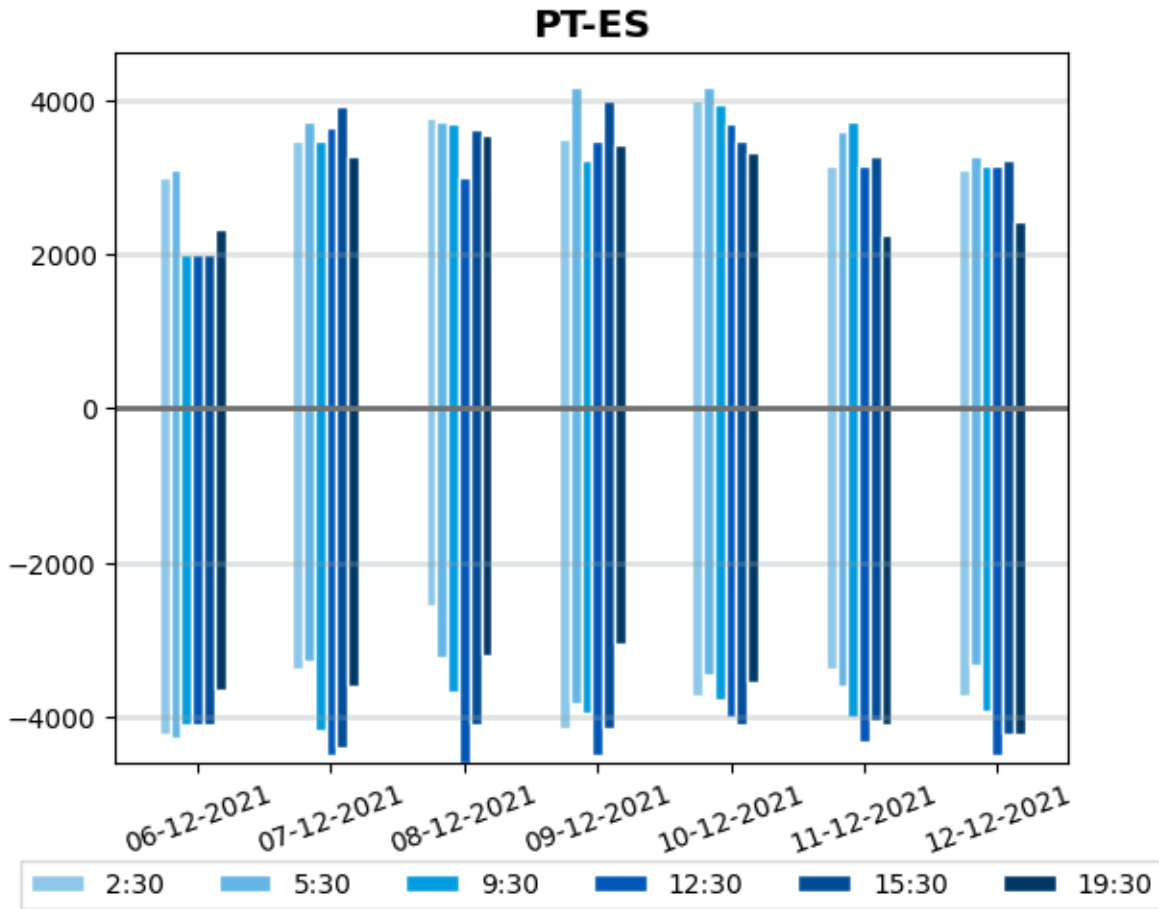
PT-ES NTCs

	2:30				5:30				9:30			
	ES-PT		PT-ES		ES-PT		PT-ES		ES-PT		PT-ES	
	D-2	IDCC 1st run	D-2	IDCC 1st run	D-2	IDCC 1st run	D-2	IDCC 1st run	D-2	IDCC 1st run	D-2	IDCC 1st run
06-12-2021	2500	4230	3900	3015	2500	4275	3900	3105	4100	4100	2000	2000
07-12-2021	3375	3375	3465	3465	3240	3285	3825	3735	3735	4185	3510	3465
08-12-2021	3510	2565	4140	3780	4095	3240	4140	3735	4050	3690	4050	3690
09-12-2021	4050	4140	4095	3510	3825	3825	4185	4185	3915	3960	3780	3240
10-12-2021	3735	3735	4005	4005	3465	3465	4185	4185	3510	3780	3825	3960
11-12-2021	3420	3375	3555	3150	3600	3600	3600	3600	4140	4005	3600	3735
12-12-2021	3735	3735	3105	3105	4050	3330	3285	3285	2499	3915	3899	3150

* Yellow cells represent IT issues for these borders and time stamps during the process. Blue cells represent the IT issues that do not imply replacement by D-2 values. Red cells represent errors when applying the D-2 values.

	12:30				15:30				19:30			
	ES-PT		PT-ES		ES-PT		PT-ES		ES-PT		PT-ES	
	D-2	IDCC 1st run	D-2	IDCC 1st run	D-2	IDCC 1st run	D-2	IDCC 1st run	D-2	IDCC 1st run	D-2	IDCC 1st run
06-12-2021	4100	4100	2000	2000	4100	4100	2000	2000	4100	3645	2000	2340
07-12-2021	3870	4500	3465	3645	4005	4410	3105	3915	3600	3600	3510	3285
08-12-2021	4410	4590	3105	3015	4320	4091	3915	3627	3195	3195	3870	3555
09-12-2021	3960	4500	3600	3465	3870	4140	3825	4005	3420	3060	3330	3420
10-12-2021	3600	4005	3690	3690	3600	4095	3600	3465	3105	3555	3420	3330
11-12-2021	4320	4320	3150	3150	3690	4050	3285	3285	3555	4095	2205	2250
12-12-2021	4500	4500	3150	3150	4230	4230	3240	3240	3780	4230	2340	2430

* Yellow cells represent IT issues for these borders and time stamps during the process. Blue cells represent the IT issues that do not imply replacement by D-2 values. Red cells represent errors when applying the D-2 values.



Comments

On PT-ES border, 26 computations failed during this week of external parallel run. 17 computations were replaced by D-2 values as fallback procedure.

Limiting elements FR-ES

Please find below the top limiting elements appearing more often over the period:

	CNEs and associated Contingencies	CNE Location	Frequency (%)
#1	IT issue		100.0 %
	Base Case		100.0 %

Limiting elements ES-FR

Please find below the top limiting elements appearing more often over the period:

	CNEs and associated Contingencies	CNE Location	Frequency (%)
#1	Branch	FR	54.7 %
	N-1 Contingency [FR]		54.7 %
#2	Tie Line	FR-ES	17.0 %
	N-1 Contingency 400 kV [ES-FR]		17.0 %
#3	Tie Line	FR-ES	17.0 %
	Base Case		7.5 %
	N-1 Contingency [FR]		7.5 %
	N-1 Contingency 400 kV [ES-FR]		1.9 %
#4	Branch 220 kV	ES	9.4 %
	Base Case		7.5 %
	N-1 Contingency [FR]		1.9 %
#5	IT issue		1.9 %
	Base Case		1.9 %

Limiting elements PT-ES

Please find below the top limiting elements appearing more often over the period:

	CNEs and associated Contingencies	CNE Location	Frequency (%)
#1	Tie Line	ES-PT	60.4 %
	N-2 Contingency 400 kV [PT-ES]		60.4 %
#2	GLSK limitation		29.7 %
	Base Case		29.7 %
#3	Branch	PT	9.9 %
	N-1 Contingency 400 kV [PT-ES]		9.9 %

*GLSK limitation row includes GLSK limitations and flow divergences divisions

Limiting elements ES-PT

Please find below the top limiting elements appearing more often over the period:

	CNEs and associated Contingencies	CNE Location	Frequency (%)
#1	Branch	PT	57.7 %
	N-2 Contingency 400 kV [ES-PT]		57.7 %

#2	Branch	PT	42.3 %
	N-2 Contingency 400 kV [ES-PT]		42.3 %